

South coast

**Cactus & Succulent
society**

newsletter

MAY 10,

1987

12:30 BOARD

MEETING Everybody come!

South Coast Botanic Gardens

1:30 REGULAR MEETING

26300 Crenshaw, Palos Verdes
Peninsula.

PROGRAM: SHOWTIME - Programs V.P. Jim Hanna will show
us slides (new and old) of past shows,
and Show Chairman Norma Holley will answer questions
about the show.

REFRESHMENTS: Joining Eleanor Barker will be Virginia Russell,
Mary Stryker, and Mary Belle Wallenhorst. THANK YOU!

PLANT SALES: Mary Belle will bring supplies, and Jim Hanna will
bring a selection of cacti & succulents for sale.

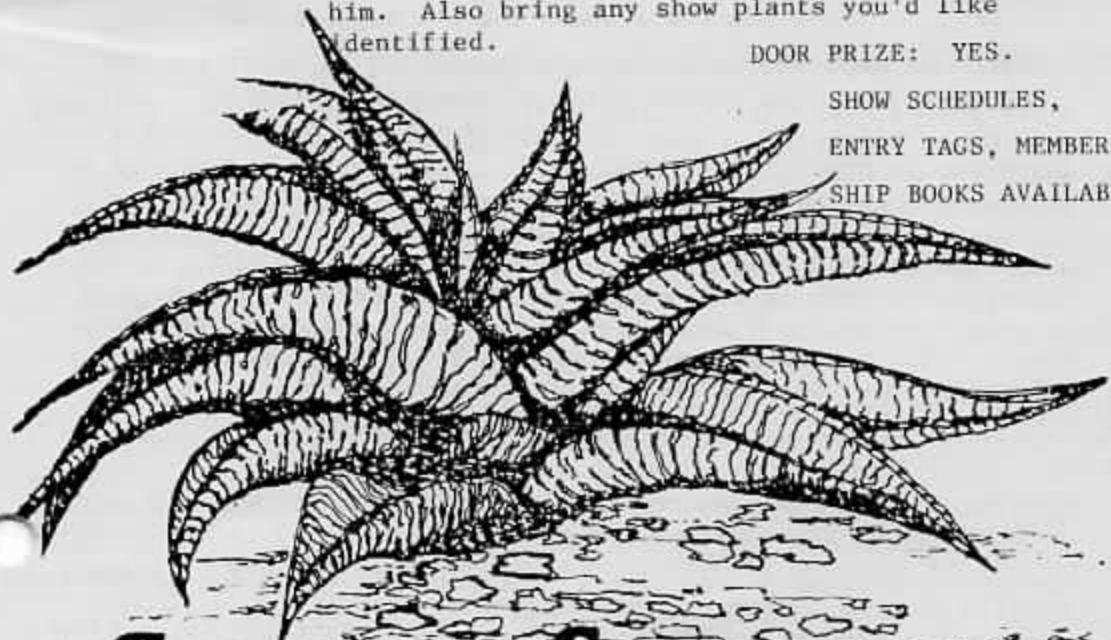
BRAGGING TABLE: Bob Causey needs a good bragging table to inspire
him. Also bring any show plants you'd like
identified.

DOOR PRIZE: YES.

SHOW SCHEDULES,

ENTRY TAGS, MEMBER-

SHIP BOOKS AVAILABLE.



CACTUS and SUCCULENT
society

1987 OFFICERS:

President Ed Hancock (375-3410)
1st VP (Publicity) Carol Kennedy (679-6021)
2nd VP (Programs) Jim Hanna, (920-3046)
Secretary Dorothy McArthur, (547-5401)
Treasurer Roz Hancock (375-3410)
Show Chairmen Norma Holley (212-6130), Bob Causey,
and Carol Kennedy.



N.L. Editor Carol Wujcik (714-963-3146)
Membership: Norma Holley, (212 6130), 2122971 Toledo St., #220,
Torrance, CA 90503-7340.

Dues are \$5 plus \$1 for each additional household member.

CORRECTION: Last month's newsletter contained a listing of how many entries were in each class last year. However the listing was set up to use THIS year's show schedule, so no need to rummage around for your old schedule.

CACTUS GARDEN: With Fiesta and our show coming up, it's important our garden look its best. Check your mounds, and if necessary, weed and care for them. If you have questions, please call Ed and Doug.

A NEW (OLD?) PUBLICATION: THE CACTUS & SUCCULENT REVIEW. Not long ago, Grace Rollerson stopped publishing her excellent CACTUS & SUCCULENT INFORMATION EXCHANGE out of Canada. And an Exchange of information is what it was, with everybody writing in. It was a tremendous help re: culture, and it was fun to read. Now there's a new publication from Canada. Is it like the old CSIE? You'll have to subscribe to find out. August 1986 was the introductory issue. It's \$8 for 6 issues, frequency not known. Write Gordon Randle, 2941 Parker Street, Vancouver, B.C. V5J 2T9, Canada. (Thanks to Fred Hutflesz for this information. Ed.).

CREDITS: Front cover Haworthia from our Sept. 1980 Newsletter may be the work of Karen Holley. Does anyone know?

Back cover drawing is definitely by Karen Holley for one of our N.L.'s.

Cactolympic Runner is by Stan Oleson; Opuntia as torch is by Elibet Marshall. (See earlier n.l.'s this year).

Setiechinopsis mirabilis is from Stephen Bernath's CACTUS COLORING BOOK.

EDITORIAL: ORPHANS OF THE ARBORETUM?

All the plant societies meeting on the weekends at South Coast and the other L.A. County Arboreta and Botanical Gardens have been told to find a new meeting place or to meet on an available evening during the week, effective this July.

I have been told that regrettably there is no word yet of any reprieve; nor is there a listing of available alternative days, times and/or locations available to the Newsletter at this writing.

This Sunday is our last board meeting and regular meeting before this July lockout (unless a special meeting during the show is arranged and publicized so everyone can attend)

But we need to plan for the future now. If we wait too long for alternatives to be discussed and decided on, then the decision is made by default because there won't be time to discuss and then vote on alternatives, much less research them, in the event there is no reprieve.

All of you South Coasters may want to bring in any ideas you have as to alternatives:

- If we stay at South Coast, which days and times are still available during the week for us?
- If we want to continue to meet on a weekend, what other locations and times are available?
- Those of you having membership in the other banished clubs, what possible times and/or locations have your groups come up with?

I doubt the Arboreta management (& I'm not talking about the local S. Coast Botanical Garden people) care that much about us except for such income and educational promotion as we can provide at showtime; and we probably don't have to actually meet at S. Coast to sponsor our cactus garden or to continue to have our show there if we wish. (Long Beach Cactus Club had no trouble scheduling its show at the LA Arboretum before in the end being joined by 2 other clubs).

I suspect the Arboreta management would be disturbed if we pulled the show but wouldn't care about our regular meetings; so if we wait to decide and either end up homeless or with an alternative day and time forced on us because of having no other options lined up, only we will be hurt. As for the rumors of a reprieve, it will be great if it happens. But I believe it would be a mistake to count on it.

Writing this editorial is what I am able to do long distance. South Coasters, you live there. What do you want to do?

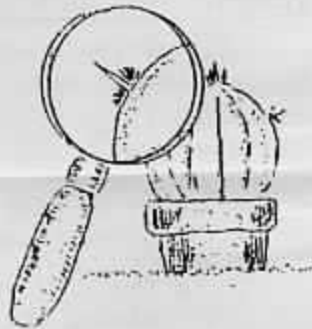
Carol

SHOW REPORT

SHOW COMMITTEE: Norma Holley (213) 212-6130
Carol Kennedy (213) 679-6021
Bob Causey (213) 675-5843

SHOW PLANT SALES: Ed Hancock (213) 375-3410
Jim Hanna (213) 920-3046

SHOW: Norma reminds you that it's time to groom and clean all plants you hope to enter into the show. Start to fill out show entry tags as soon as you get them. These things can be done ahead of time at your "leisure." Look closely at your plants; now is the time to check for wildlife.



QUESTIONS? This will be the meeting to ask. Questions I have every year include which color tag is which; does it matter if your plants lean towards the sun; will we have the potpourri table? Also, are the awards the same as last year? What if the experts call my plant by different names? And so on.

SALE PLANTS: DON'T FORGET TO WORK ON YOUR DONATED PLANTS. Pick up any pots and labels you may need. There are lots of plastic pots. But if you take a pot, be sure they come back with plants in them! Label them as best you can with name of plant and the word 'club'.

MEMBERS WHO WISH TO SELL THEIR OWN PLANTS at this sale, should be sure everything is doubletagged - with plant name, your name or code, and price. The split is 50/50.

REMEMBER, IF YOUR PLANT PLEASES YOU, IT'S WORTH BRINGING TO THE SHOW IF ONLY FOR THE POTPOURRI TABLE.

ANSWER: Green forms are for advanced exhibitors, and the pink are for novice.

SHOW ENTRIES MUST BE READY EARLY FRIDAY: THEY WILL BE ACCEPTED AT 3:00 pm on Friday June 12. BEFORE THAT TIME, NORMA WILL NEED HELP SETTING UP THE SHOW. UNTIL THE TABLES ARE IN PLACE, SETUP CANNOT TAKE PLACE.

THIS PERIOD OF CONCENTRATING ON YOUR PLANTS CAN ONLY MAKE YOU MORE KNOWLEDGEABLE — A BETTER GROWER.



TRY TO AVOID SHOWTIME ANGST.

TRY TO SEND ANY BUGS ON VACATION.



South Coast Cactus and Succulent Society

15 TH ANNUAL /HOWE /ALE
JUNE 13 & 14



INFO. EVE. 213
212-8130



Entries accepted Friday, June 12, 7:00 to 9:00 PM
Show open Saturday, June 13, 12:00 AM to 4:30 PM
Sunday, June 14, 9:00 AM to 4:30 PM
Sale open Saturday, June 13, 9:00 AM to 4:30 PM
Sunday, June 14, 9:00 AM to 4:30 PM

South Coast Botanic Gardens
26300 Crenshaw Boulevard
Palos Verdes Peninsula

FOR YOUR INFORMATION:

How do you tell an Echinocactus from a Ferocactus? The Echinocactus has a wooly crown from which the flowers and fruit come. Not for nothing is Echinocactus polyccephalous called "Cottontop". It is a beautiful multiheaded species of the Mojave desert.

PLANNING AHEAD

It's time to start thinking about what you will enter in our June show. Will you want to enter plants as collections? How will you pot them? How about some kind of display? If you think you might like to exhibit an educational or other display, let Norma know as soon as possible so space can be planned with your display in mind. If you think you might like to put together an educational display, some ideas follow. Keep in mind that the display need not be large nor encompass everything about a subject. In fact, small is sometimes better. Like a sermon which makes just one point well, it's easy to remember and sticks in the mind.

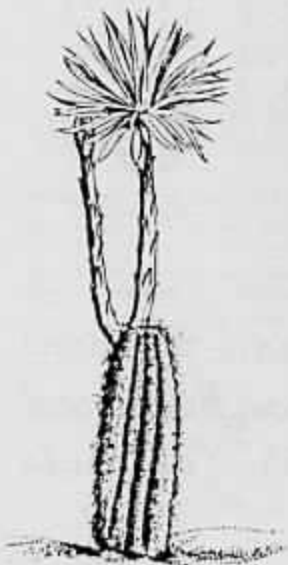
EDUCATIONAL DISPLAY

The nice thing about an educational display is that it's tremendously appreciated by the public and newer members especially. It's a lot of work, but once a display is together it can be entered at more than one show - plus it helps fulfill the ideals upon which most of our clubs are founded.

IDEAS:

- Succulents from a specific geographical area
- How to propagate succulents
- Caudiciforms - what are they?
- Plant families with succulent members
- Interesting and relatively safe succulents for children and the childlike!
- Succulent forms and how they got that way
- C & S for beginners
- General light requirements for major genera
- C & S you can grow in the S. Cal. landscape
- Hybridizing ie. Echeverias or bigenerics
- Succulents with a distinguishing feature ie. Cephaliums
- Monstrosities
- Mimicry

ETC ETC ETC ETC ETC ETC ETC ETC ETC ETC



Sottechmopsis mirabilis

CHANGE OF ADDRESS: We received a post card recently from Margaret Dougherty...who has moved to the desert:

The P.O. has been forwarding the Newsletter to me. I moved to Palm Springs in December. My cactus & succulents survived the move, but I kept them indoors.

I don't have Norma's address, but will try to come to the June Show, and will give her a check then.

Many thanks,

Margaret Dougherty
536 Calle Encilia
Palm Springs, CA 92264

P.S. Found a fantastic nursery in Morengo Valley. You dig and pot your own beautiful plants for 39¢.

...Perhaps our next field trip...

BUYING IN MULTIPLES: Barbara Allen has said that when she really likes a particular plant, she often buys another and another... I find I do the same, and my initial disgust at myself for having bought the same plant again is matched only by subsequent joy when I find I've got a different clone...variations on a theme.

- Anon.

LIBRARY: By now our library should have a copy of the Caudiciform Book. Steve also will have lists of the library books available - to hand out. He can't bring all our books every time.

The library is wonderful for checking out the names of plants you plan to exhibit.



DESERT SPRING

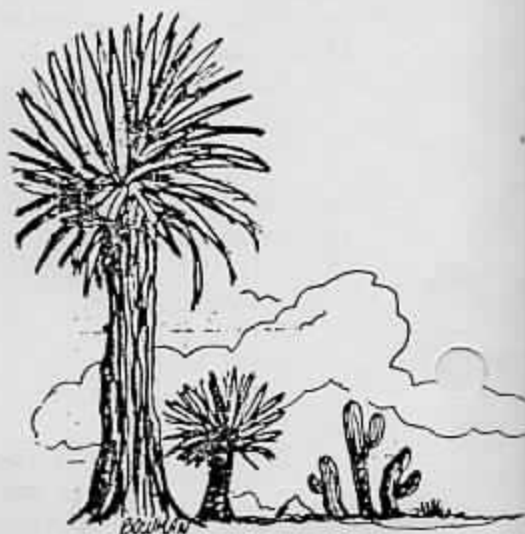
James M. Cain, writing in the *Examiner* recently, said, "Some time ago, by accident of travel schedules, I observed the progress of Spring as it spread northward over the United States. . . . It is something for poets to write about, and it left me cold. It had the same affect on me it had always had. It is too fragrant, too pretty, too contented. It makes me feel as church-bells do, when they ring on Sunday evenings; that peaceful, pastoral ding-dong to me is the most dismal sound in the world.

In fact, it wasn't until I got far away from this highly poetical Spring that I felt what the average person seems to feel when he gazes on Nature. We had just crossed the sink that holds the Salton Sea, and entered that last of the big deserts before you get to the Coast. It was so hot you didn't dare move; the club car was gray with a dust that not even the tightest doors and windows can keep out; all you could see was sand that drifted like snow, and bleak, brown hills in the distance.

It would be hard to imagine a more horrible place, and yet as I looked out on those stunted desert bushes, all warped and twisted by a wind that never stops blowing, I got something. There was nothing sweet, contented, and pretty-pretty here. It was a grim, desperate and terrible struggle for existence, and all of a sudden I was stirred by it, excited by its drama, lifted by its stark, lethal beauty.

They say the desert gets you, after a while; that once you begin to feel it no other place seems like home. I suppose so. I have been in the Southwest now for three years, and, like all the rest, have begun chasing the mirages."

DESERT PLANT LIFE
July 1934





"A true journey, no matter how long
the travel takes, has no end."

— William Least Heat Moon
BLUE HIGHWAYS

"My own homely technique when I walk out in my own country and realize that I am in danger of seeing nothing at all is simply to greet each thing as it comes along, by name if I know it: "That is a wood frog," "This is the caterpillar of *Papilio glaucus*," and "This is some member of the Compositae clan I don't remember ever to have seen before." Usually, if the thing is not too common, I stop a moment to pass the time of day with it, much as one does with an acquaintance met on the street. "A nice day — for frogs," I may remark pleasantly; or perhaps, "I don't think I've seen you since last summer." The plants and animals to whom I issue such bits of conversational small change are not any more interested or impressed than the people to whom one says the same things, but neither are they much less so. And in both cases the purpose achieved is much the same. I have noticed them; sometimes they have noticed me; and I am reminded of something which a certain kind of person is rather prone to forget — that there are other creatures in the world beside himself."

— Joseph Wood Krutch
BAJA CALIFORNIA AND THE GEOGRAPHY
OF HOPE, Sierra Club, 1967.

Desert Safety

Respect the desert, and you need not fear it.
Keep these points in mind:

- Know your physical limits in the heat and rugged desert terrain. Summer temperatures can reach 125°F.
- ALWAYS carry plenty of water . . . and drink it! It does you no good in your canteen.
- Don't hike alone — use the buddy system.
- Tell companions and park headquarters of your trip plans . . . and be out on time, or rangers will be searching for you.
- Use maps. Detailed topographical maps of the entire park are available at the Visitor Center.
- Keep your vehicle stocked with extra water, shovel, tools, flares, and blankets.
- If your vehicle breaks down, stay with it! It's much easier to find a vehicle than a wandering person.
- Wear sturdy footwear and a hat, and use sun protection.
- Should you find yourself in trouble, don't panic. If you've followed the above precautions, help will soon be on the way.

Anza-Borrego Desert
State Park Bulletin



kangaroo rat

REN
WAAR

The following is from THE CACTUS DIGEST, May 1987, Betty Cordes, editor, St. Louis' Henry Shaw Cactus Society.

MORE ABOUT PRICES

At one time or another most of us have surplus plants that we want to dispose of. The question then arises, "What price should be charged?"

The answer is based on your reason for selling a plant. If profit is the motive, then refer to my previous article. But on the other hand, if your plants are simply crowding you out, profit is not involved any more than in bowling, skiing, etc.

Perhaps a better comparison could be made with crafts. You would like to recover the original costs. Your time and space are not that important because the time was spent for pleasure and/or satisfaction. The space you already had as a part of your residence.

Price may also be based in part on how badly you want to keep a plant. Suppose a visitor spots two plants of *Haworthia truncata* in your collection for which you paid \$5 each in 1984. He wants one and you only want to keep one. \$5 could be a fair price. But suppose you want them both and he wants one badly too. Then settle for whatever you can get - or keep it.

Now, suppose you purchased a packet of seed for \$1 a year ago. You planted the seed in 4 pots. Each pot contains from 10 to 100 plants the size of a pencil eraser. You only want one pot for yourself. 50¢ to \$2 would be fair. Retailers who want to grow them on to retail size can grow their own at about the same cost. So don't expect too high a price from them. Also, don't expect a retailer to pay more than 50% of the retail price for an established plant.

As a general rule, don't give a plant away; it won't have much value to the plant nut who also has too many plants. Nor is a free plant of value to the owner of a black thumb.

Children are exceptions to the above rule. They often treasure something free as much as something costly. After all, they already receive free board, room and medical care. It doesn't hurt to say, "My original plant cost \$10" (or whatever). You may not have only disposed of a plant but also inspired a new business enterprise.

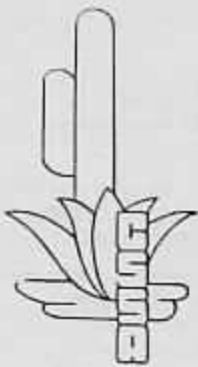
Another exception is churches, charities, clubs, etc., that hold fund raising sales. Try to be sure that they charge a fair price of at least 50% to 100% of the current retail price seen in shops or catalogs. They will welcome your price suggestions.

You might also give away plants at a yard sale with other purchases.

Whether you sell your surplus plants or give them away, think of the enjoyment they have brought you. Then hope you will be passing some of this pleasure on.

Bob Wagner
House Plants, Unlimited
Columbia, MO 65201 (also HSCS member)





THE CACTUS & SUCCULENT SOCIETY OF AMERICA

(INCORPORATED)

2 April 1987

Dear

My job assignment as a new member of the CSSA Board is to start a seed depot for CSSA. I have spent the last couple of months investigating and comparing various seed funds of other US plant societies and foreign C&S societies. Some publish a separate list once a year, some publish lists in their journals, others have catalogs. I have decided to have a separate list that can be updated whenever new seed arrives and others are sold out.

Other societies allow only members to donate and to purchase. Our seed depot will be unique in that it will be open to any individual who has an interest in the propagation of C&S. This is the purpose of the seed depot - to promote the propagation of cacti and succulents.

The depot is dependent on donations, so I would like for you to please announce to your society and/or have your editor print this letter in your newsletter.

The depot would like clean, identified C&S seed. If available would appreciate source of plant or seed, age of the seed, collection #'s, and geographical data if it came with the seed or plant. If there are special germination tips, please include. A brief description such as flower color or winter grower would be of value, too.

Any individual donating over 100 seeds per species of twenty different species will be issued a credit of \$3.00 which can be used anytime for the purchase of seed. A record will be kept for each order and donation, so the twenty different species do not have to be given at one time.

Seed can be from your own plants or can be purchased from reliable sources and donated. The first seed list will be ready May 1, 1987. Some seed will be in very limited supply so will not be listed, but feel free to ask on your order for any seed you are interested in, and I will let you know. The seed list will be available from me anytime during the year upon request which is accompanied with a SASE (self addressed stamped envelope).

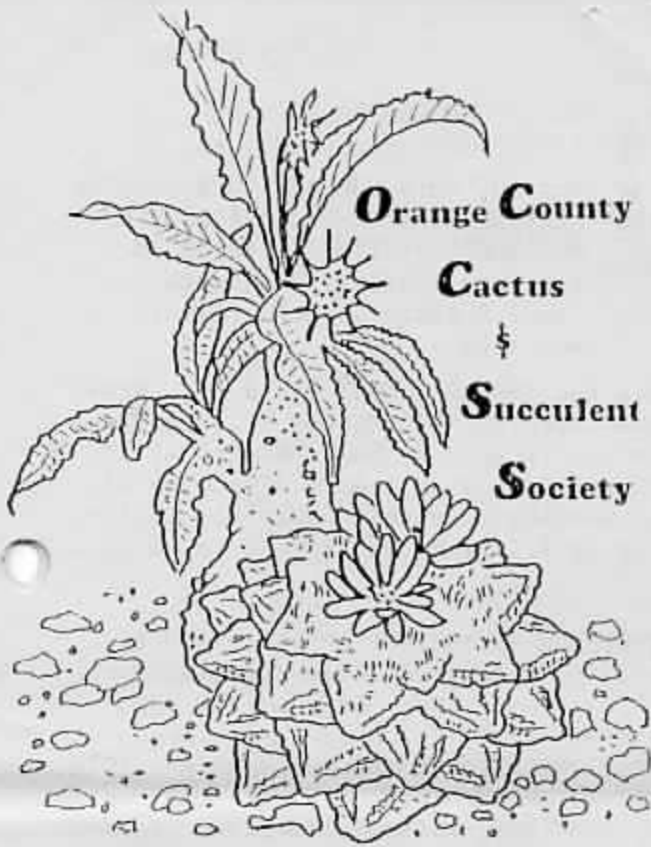
Thank you for your cooperation.

Green's up,

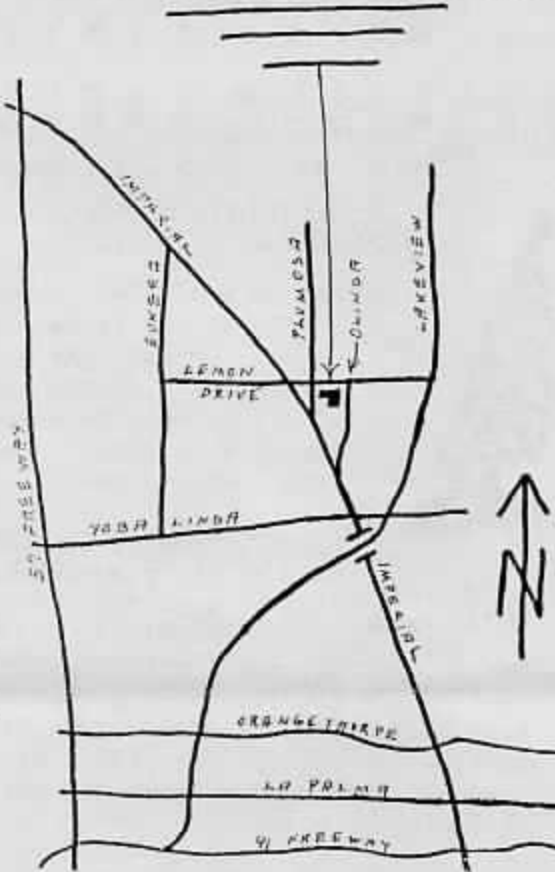
CSSA Seed Depot
Prg 5pate
27821 S. E. Sun Ray Drive
Boring, OR 97009

Yorba Linda District Library
18262 Lemon Dr. - Yorba Linda

**Orange County
Cactus
&
Succulent
Society**



**11th ANNUAL SHOW & PLANT SALE
MAY 16 & 17 1987 9^{am} TO 4^{pm}**



The Gates Cactus and Succulent Society will have its Annual Cactus and Succulent Show and Sale on May 30 and 31, 1987, at the San Bernardino County Museum, 2024 Orange Tree Lane (Take California St. Off-Ramp from I-10), Redlands, from 1 - 5 P.M. both days. The Museum will also be open. The gardens are being landscaped with Succulents and are open.

For more information call - Leo Pickoff
714-686-8035

MOTHER'S DAY — MEMORIAL DAY

CALENDAR

S	M	T	W	T	F	S	S	M	T	W	T	F	S
												1	2
3	4	5	6	7	8	9	(10)	11	12	13	14	15	16
17	18	19	20	21	22	23	24	(25)	26	27	28	29	30
31	MAY												

May 10, THIS SUNDAY: OUR REGULAR MEETING AT 1:30 PM, PRECEDED BY OUR BOARD MEETING AT 12:30 PM. Everyone invited...at South Coast Botanic Garden. (Also, Mom's Day)

A SALUTE TO THOSE WHO PAID THE PRICE OF FREEDOM



May 16 & 17, Sat. & Sun., the ORANGE COUNTY C & S SOC. SHOW & SALE at the Yorba Linda Library, 18262 Lemon Dr., in Yorba Linda. On Sat. the sale starts at 9 AM and the show at 12 PM: on Sun., show & sale are from 9 AM - 4 PM. Showing of plants is open to anyone wishing to enter. See Show Chairman C. W. Elliott. Setup is Friday from 1 PM - 9 PM, & Sat. from 7 AM - 8 AM.

May 17, Sunday, the EPIPHYLLUM SOCIETY OF AMERICA SHOW & SALE at the L.A. Arboretum on Baldwin Ave. in Arcadia, 11 AM - 4:30 PM.

May 17, Sunday, the HUNTINGTON INVITATIONAL PLANT SALE for members, 10AM to 4 PM. A few free invitations will be available on a first-come basis. Each will admit 2 people. To apply, send a SASE (self-addressed stamped envelope) & request to: Plant Sale, Dept. C, The Huntington Botanical Gardens, 1151 Oxford Road, San Marino, CA 91108. Many unusual plants, including succulents.

May 16 & 17, FIESTA DE FLORES at S. Coast Botanic Gardens, general plant sale and major fund-raiser for S. Coast. 9 - 4.

May 24, Sunday, the SOUTH BAY EPIPHYLLUM SOC. FIRST SHOW & SALE at S. Coast Botanic Gardens, 11 - 4. For more info. contact Dick Kohlschreiber

June 6 & 7, Sat. & Sun., THE SAN DIEGO C & S SOC. SHOW & SALE, Majorca Room, #101, Casa Del Prado, Balboa Park, San Diego.

June 13 & 14, OUR SOUTH COAST C & S SOC. SHOW & SALE!

July 3 - 5, CSSA SHOW & SALE (the national) at the L.A. Arboretum in Arcadia, 9 - 4:30.

Aug. 22 & 23, Sat. & Sun., SECOND INTER-CITY SHOW & SALE at the L.A. Arboretum, including the Long Beach C.C. This is an open show to all wishing to enter. Contact Show Chairmen Larry Grammer, Fred Hutflesz & Woody Minnich.

SPECIAL EVENTS:

June 20 - 26, CSSA CONVENTION IN TEMPE (Phoenix) ARIZONA. See previous enclosure for details.

Sept. 18 & 19, Friday & Saturday, HUNTINGTON SYMPOSIUM AND IOS MEETING. Lots of speakers, rare plant auction; contact the Huntington Botanical Gardens, Botanic Dept., 1151 Oxford Rd., San Marino, CA 91108.



at the
SOUTH COAST BOTANIC GARDEN
26300 Crenshaw Boulevard
Palos Verdes Peninsula, California

FIESTA DE FLORES: Each year, the South Coast Botanic Garden Foundation has there Annual Benefit Plant Sale called the Fiesta de Flores. This year it will be May 16th and 17th, 9:00 am to 4:00 pm. Several of our members, including myself, are deeply involved in the Fiesta. This is the main fund raiser for the Gardens and essential to keep this Garden functioning. If you have never attended the Fiesta, you're in for a treat. We'll have common plants, rare plants, many newly introduced plants, lots of bargain plants plus demonstrations and band concerts. Please plan on attending the Fiesta. If you'd like to be a Volunteer helper at the Fiesta, contact me at our Meeting.

- Dick Kohlschreiber
THE EPI-GRAM, May 1987

FIESTA DE FLORES

ANNUAL BENEFIT PLANT SALE

MAY 16 & 17, 1987

South Coast Botanic Garden
26300 Crenshaw Boulevard
Palos Verdes Peninsula

Spectacular Specials • Exotics

Rare Beautiful Bargains

Plus Crafts • Displays • Gifts

Demonstrations • Refreshments

Live Band Concerts

Sponsored by South Coast Botanic Garden Foundation as a benefit for the improvement of the Garden.

Close your eyes and hear the song of the light:
Noon takes shelter in your inner ear

Close your eyes and open them:
There is nobody not even yourself
Whatever is not stone is light

Octavio Paz

BAJA CALIFORNIA
Sierra Club, 1967

SOUTH COAST CACTUS & SUCCULENT SOC.
10860 El Mar Avenue
Fountain Valley, CA 92708



FIRST CLASS
PLEASE

Norma Holley
2971 Toledo Street #220
Torrance, CA 90503-7340

