

Prickly News

South Coast Cactus & Succulent Society Newsletter

February 2019

Click here for our web site:
<http://www.southcoastcss.org>

Click here for our Facebook page

NEXT MEETING

Guillermo Rivera:

"Argentina and Chile"

Sunday February 10, at 1:00 pm
(Program starts at 1:30pm)

REFRESHMENTS FOR FEBRUARY

Thanks to those who helped in December.

| | |
|---------------|--------------|
| Maria Capaldo | Lisa Mori |
| Gloria Diaz | Keka Ray |
| Toni Luz | Irene Rich |
| Ana MacKenzie | Irene Sasaki |

Volunteers for February refreshments are:

| | |
|---------------|---------------|
| Gloria Diaz | Ana MacKenzie |
| Lou Hagemeyer | |

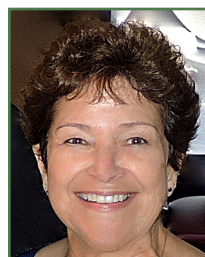
If you would like to bring something to the meeting please do so - thanks!

Volunteers: Please report to the kitchen after the meeting if you are able to help with cleanup.



IN THIS ISSUE

| | |
|--|---|
| PRESENTER FOR THE MONTH..... | 2 |
| CACTUS OF THE MONTH..... | 2 |
| SUCCULENT OF THE MONTH..... | 3 |
| MINI-SHOW PLANTS 2019..... | 4 |
| MINI-SHOW PLANTS 2020..... | 5 |
| MINI-SHOW RESULTS..... | 5 |
| MINI-SHOW STANDINGS..... | 5 |
| CALENDAR OF UPCOMING EVENTS..... | 6 |
| VOLUNTEER JOBS - 2019 SHOW AND SALE..... | 7 |
| ! NOTICES !..... | 8 |
| BOARD OF DIRECTORS..... | 8 |
| EDITOR'S CORNER..... | 8 |



PRESIDENT'S MESSAGE

The dates for this year's **Show and Sale** have changed to **April 6-7, 2019**, the first weekend in April. Please put this on your calendar and let others know of the new date.

At the February meeting, Nancy Jengo, show volunteer coordinator, will continue recruiting members for various positions. Please think about having a **display table**, of either artistic or specimen plants. See Carol Knight, Show and Sale Chair, to arrange this. Also, check your plant collection to see if you have some plants you can get ready for the **Society display tables**. You will receive a Mini-show point for each plant up to 4 for display plants or 4 points for a display table. If you're new to the society, we will explain in some detail these activities at the meeting.

Our **Society sales table** has been a great success for the last 2 years, and we raised substantial money for the Society from member donated plants. So, please save cuttings when you repot plants or need to prune back your yard. Put them in clean pots with a name label for the society sales table. Help will be available to identify plant names.

We also need cuttings for the **Children's potting table**, so there are many places to put those extra plants you have!

Finally, we need your help in **promoting** the show and sale by distributing postcards and informing friends and neighbors. We need to correct the postcards that were distributed in January. Please bring them to the next meeting and exchange them for corrected cards. If you have any ideas for publicity, let Anita Caplan know.

Thanks to **Laurel Woodley** for her exceptional presentation on "Plant Taxonomy" at the January meeting, which was informational as well as enjoyable. Photos of the meeting and highlights of the presentation are on our Facebook page. <https://www.facebook.com/South-Coast-Cactus-Succulent-Society-128671480523430>.

It was good seeing so many of our members at the **Huntington Desert Forum**. It was a wonderful time with lots of plants to discover, photograph and enjoy. The Sale also gave me a chance to buy some unusual plants.

Guillermo Rivera will be our speaker at the February's meeting. We look forward to the presentation of his Argentina and Chile excursion.

See you there! Maria Capaldo, President

PRESENTER FOR FEBRUARY: Guillermo Rivera "Argentina and Chile"

Guillermo presents the best cacti and succulents of both countries, plus the unique experience of crossing the Andes in two different passes. Starting from Central Argentina in Cordoba and heading northwest towards the highlands, he reviews over 60 Argentinean species of cacti many of them blooming and or seeding, from the small Rebutias and Parodias, to several forests of large Trichocereus pasacana. After crossing the Andes he enters the Atacama Desert. along the Chilean coast where most of Copiapoa species grow, with spectacular pictures of large clumps of Copiapoa dealbata, Copiapoa columna-alba among others. Heading back to Argentina, he crosses the San Francisco Pass, the highest pass of the Andes: with an altitude of 4350 meters (over 14.000 feet !), with aquamarine lakes, flamingos, and volcanoes reaching 6800 meters! This presentation follows one of his seldom offered tours. Don't miss it.



Guillermo was born in Argentina and has a Doctorate in biology. He owns a tour company titled 'Plant Expeditions' and gives plant, birding and bicycling tours of Ecuador, Peru, Bolivia, Argentina, Chile, Brazil, South Africa, Namibia and Madagascar. He specializes in knowing the locations of numerous cacti and succulents. The website for his company follows:

<http://www.plantexpeditions.com/argentina-chile>

CACTUS OF THE MONTH: *Stenocactus*, *Echinofossulocactus*

Submitted by Jim Tanner

[Ed: All species in the genus *Echinofossulocactus* have been moved to other genera; most have been moved to *Stenocactus*. Plants that were bought labeled as *Echinofossulocactus* can be entered into the Mini-Show using that name, however it would preferable to use the new name on a website like lifle.com.]

Stenocactus is a genus of northern and central Mexican cacti of around 10 species related to *Ferocactus*. It now includes *Hertrichocereus* and *Echinofossulocactus*. They are mostly small globular cactus, of very variable characteristics, generally below 4 inches in diameter (10 cm), often solitary, but sometimes clustering as they age. The name *echinofossulocactus* comes from the Latin for

[Click to see the same with more photos on our website](#)



Stenocactus multicostatus



Stenocactus crispatus

'Echinocactus with a little ditch', referring to the small wrinkle extending from the top of the areole in some species. They contain the wave cacti, also called brain cacti, that are so named because of their large number of undulating ribs.

The short funnel-shaped flowers are generally striped with a darker median line and, just above 1 inch across

(2.5 cm). These flowers come in late summer and last 3-4 days. Stenocactus are not always self-fertile, so you might need to have several non related plants flowering at the same time, in order to get seeds. The seeds come in green pods.

They are propagated by seeds that germinate easily.



Stenocactus phyllacanthus



Stenocactus coptonogonus

SUCCULENT OF THE MONTH: Euphorbia from Madagascar

Submitted by Jim Tanner

This month's "Plant of The Month" Succulent is Euphorbia from Madagascar. These are plants that are endemic only to the island of Madagascar.

Some of the most interesting euphorbias come from Madagascar.

Although many euphorbias are very easy to grow, some are very difficult, turning immediately to mush when over watered, or watered out of season. Care must be given in watering, keeping them warm and wet while

growing, and cooler and dry when dormant. They do best in an open potting mix, with equal parts of pumice, sand and an organic component, or commercial potting soil. Protection in a greenhouse or even a garage for a month or two in the middle of the winter will greatly increase the survival rate.

Most euphorbias are easy to propagate. The green stems can be removed, left to dry for at least week or even a bit more, and then replanted. The newly planted stems take a few weeks to establish, and then start growing.



Euphorbia cap-saintemariensis



Euphorbia pachypodioides



Euphorbia cylindrifolia



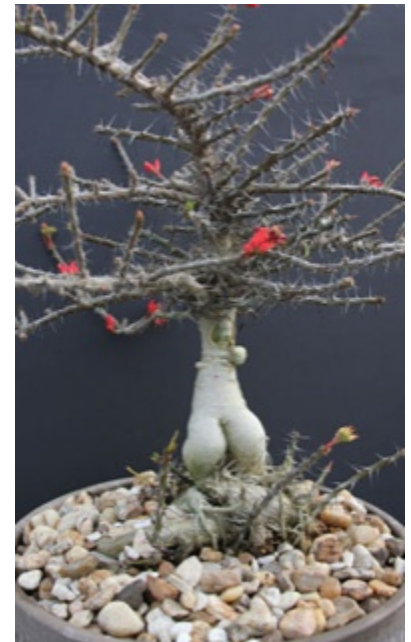
Euphorbia francoisii



Euphorbia hedyotoide



Euphorbia milii



Euphorbia pedilanthoides



MINI-SHOW PLANTS OF THE MONTH (POM) 2019

| | Cactus | Succulent |
|-----------|--|-------------------------------------|
| February | Stenocactus, Echinofossulocactus | Euphorbia from Madagascar |
| March | Thelocactus | Aeonium, Greenovia |
| April | SHOW & SALE | SHOW & SALE |
| May | Cactus Dish Garden | Succulent Dish Garden |
| June | Rebutia, Aylosteria, Sulcorebutia, Weingartia | Echeveria |
| July | Matucana, Oroya | Mesembs, NO Lithops or Conophytum |
| August | Epithelantha, Frailea, Aztekium | Dyckia, Hechtia, Puya |
| September | Variegated cactus | Variegated Succulent |
| October | Turbinicarpus | Adromischus |
| November | South American columnar cactus (Espostoa, Oreocereus, Cleistocactus, etc.) | Pelargonium, Sarcocaulon, Tylecodon |
| December | HOLIDAY PARTY | HOLIDAY PARTY |

Click to see complete lists on our website

MINI-SHOW PLANTS OF THE MONTH (POM) 2020

| | Cactus | Succulent |
|----------|---------------------------------------|-----------------------------------|
| January | Mammillaria straight spine (clumping) | Aloe |
| February | Epiphytic Cactus | Haworthia, Astroloba |
| March | Echinocactus | Agave, Manfreda, (inc. x Mangave) |

MINI-SHOW RESULTS - January 13, 2019

| | | | |
|-------------------------------|------------|-----------------|---|
| Open Cactus | 1st | William Wilk | <i>Mammillaria matudae</i> |
| | 2nd | William Wilk | <i>Mammillaria rhodantha</i> |
| | 3rd | Jim Gardner | <i>Mammillaria spinosissima</i> |
| Open Succulent | 1st | Maria Capaldo | <i>Lithops hookeri</i> |
| | 2nd | Laurel Woodley | <i>Lithops</i> sp. |
| | 2nd | Maria Capaldo | <i>Lithops fulviceps aurea</i> |
| Intermediate Cactus | 1st | Sally Fasteau | <i>Mammillaria candida</i> |
| | 2nd | Sally Fasteau | <i>Mammillaria spinosissima</i> |
| | 2nd | Coni Nettles | <i>Mammillaria hahniana</i> |
| | 3rd | Bernard Johnson | <i>Mammillaria</i> |
| Intermediate Succulent | 1st | Sally Fasteau | <i>Lithops</i> |
| | 2nd | Coni Nettles | <i>Lithops salicola</i> |
| | 3rd | Sally Fasteau | <i>Lithops</i> |
| | 3rd | Sally Fasteau | <i>Lithops</i> |
| Novice Cactus | 1st | Nancy Mosher | <i>Mammillaria marksiana</i> |
| | 2nd | Nancy Mosher | <i>Mammillaria mystax</i> |
| | 2nd | Jim Tanner | <i>Mammillaria uberiformis</i> |
| | 3rd | Ted Johnson | <i>Mammillaria ritteriana</i> |
| | 3rd | Suzanne Sover | <i>Mammillaria hahniana</i> |
| Novice Succulent | 1st | Nancy Mosher | <i>Conophytum bilobum</i> |
| | 2nd | Martha Bjerke | <i>Lithops</i> sp. <i>viridis oliverlea</i> |
| | 3rd | John Nisewanur | <i>Lithops</i> |

Click for photos of the winning plants on our website

SCCSS MINI-SHOW STANDINGS (as of January 13, 2019)

| Open Class | Cactus | Succulent | Total |
|----------------------|--------|-----------|-------|
| Capaldo, Maria | 3 | 11 | 14 |
| DeCrescenzo, Phyllis | 3 | 3 | 6 |
| Gardner, Jim | 2 | | 2 |
| Wilk, William | 11 | | 11 |
| Woodley, Laurel | | 4 | 4 |

| Intermediate Class | Cactus | Succulent | Total |
|--------------------|--------|-----------|-------|
| Fasteau, Sally | 12 | 10 | 22 |
| Johnson, Bernard | 3 | | 3 |
| LaForest, Dale | 2 | | 2 |
| Neely, Jade | 3 | 3 | 6 |
| Nettles, Coni | 6 | 6 | 12 |
| Short, Mike | 1 | | 1 |

| Novice Class | Cactus | Succulent | Total |
|-----------------|--------|-----------|-------|
| Bjerke, Martha | | 5 | 5 |
| Cottrell, Diane | 1 | | 1 |
| Johnson, Ted | 4 | | 4 |
| Nancy Mosher | 11 | 6 | 17 |
| Nisewaner, John | | 4 | 4 |
| Sover, Suzane | 2 | | 2 |
| Stenson, Dean | 2 | | 2 |
| Tanner, Jim | 5 | | 5 |

Click to see the standings on our website

CALENDAR OF UPCOMING EVENTS FOR 2019

- Feb 9** **San Diego C&SS, Winter Show & Sale.**
Balboa Park, Room 101, San Diego, CA. INFO: 619-990-2051
- Mar 21-23** **Orange County C&SS Spring Show & Sale**
Thurs. 21st 6-9pm, Fri. 22nd 9-7pm, Sat. 23rd 9-5pm.
Anaheim United Methodist Church, 1000 State College Bl., Anaheim, CA. INFO: 562-587-3357
- Apr 13** **Conejo C&SS Plant Sale**
9am to 3pm, Elks Lodge, 158 N. Conejo School Road, Thousand Oaks, CA 91362
INFO: conejocss@hotmail.com
- Apr. 6-7** **South Coast C&SS Show & Sale**
9am-4pm, South Coast Botanic Garden, 26300 Crenshaw Blvd., Palos Verdes, CA.
<http://www.southcoastcss.org>, INFO: cknighthgardens@yahoo.com, setup Friday 5th.
- Apr. 28** **Huntington Plant Sale**
10am-5pm, Huntington Botanical Gardens, 1151 Oxford Road, San Marino, CA. 626-405-3504
- May 4-5** **Sunset C&SS Show & Sale**
Veterans Memorial Center, Multi-Purpose Room, 4117 Overland Ave., Culver City, CA.
INFO: 310-822-1783
- May 5** **South Bay Epiphyllum Society Show & Sale**
9am To 4pm, South Coast Botanic Garden, INFO: 310-833-6823
- May 10-11** **Gates C&SS Show & Sale**
Fri & Sat 9am-4pm, Redlands Church of Nazarene, 1307 E. Citrus Ave., Redlands, CA.
INFO: 909-910-9195 or www.gatescss.com
- May ??** **Long Beach Cactus Club Plant Show & Sale**
INFO: 310-647-7300
- May 25-26** **Central Coast C&SS Annual Show & Sale**
Sat 10-5pm, Sun 10-4pm, Ludwick Center, 864 Santa Rosa, San Luis Obispo, CA.
INFO: 805-237-2054, www.centralcoastcactus.org
- Jun 1-2** **San Diego C&SS Summer Show & Sale**
Balboa Park, Room 101, San Diego, CA. INFO: 858-382-1797
- Jun 8-9** **Los Angeles C&SS- Drought Tolerant Plant Festival Show & Sale**
June 8th 9-4pm, June 9th 9-3pm, Sepulveda Garden Center, 16633 Magnolia Blvd., Encino, CA.
INFO: www.lacactus.com
- Jun 28-30** **CSSA Annual Show & Sale**
Huntington Botanical Gardens, 1151 Oxford Road, San Marino, CA.
Plants Sales Start June 28th Thru Jun. 30th, 10am To 5pm
Show Opens June 29th Thur June, 30th 10am-5pm INFO: 626-405-3504
- Jul 17-20** **CSSA Convention**
INFO: gunnar.eisel@gmail.com, <http://www.cssaconvention.com/>
- Jul 26-27** **Orange County C&SS Summer Show & Sale**
Fri. July 26th Noon-8pm, Sat. 27th 9-7pm, 1000 S. State College Bl., (Anaheim United Methodist Church) Anaheim, CA. INFO: rmaton Call 949-212-8417
- Aug 10-11** **34th Annual Intercity Show & Sale**
9am-5pm Daily. LA County Arboretum, 301 No. Baldwin Ave., Arcadia, CA.
INFO: Call Tom Glavich 626-798-2430 or John Martinez 805-390-2139 or www.intercityshow.com
- Aug 31** **Huntington Botanical Gardens Succulent Symposium**
All day at The Huntington 626-405-3504
- Sep 14** **Los Angeles C&SS Fall Sale**
9-4pm, Sepulveda Garden Center, 16633 Magnolia Blvd., Encino, CA. INFO: www.lacactus.com
- Sep 15** **Long Beach Cactus Club Annual Plant Auction**
11-1pm, Rancho Los Alamitos, 6400 Bixby Hill Road, Long Beach, CA. 90615. INFO: 562-631-5876

*Click to see the calendar
(with flyers) on our website*

CALENDAR continued

- Oct 12-13 Bakersfield C&SS, Show & Sale**
Sat. 10-5pm, Sun. 11-3pm, St. Paul's Church, 2216 17th Street, Bakersfield, CA 93304.
Free Admission & Parking, INFO: 661-831-8488
- Oct 25-27 Huntington Fall Plant Sale**
Huntington Botanical Gardens, 1151 Oxford Road, San Marino, CA. INFO: 626-405-3504
- Oct 26-27 Palomar C&SS Fall Show & Sale**
Sat. 9-5, Sun 10-3, San Diego Botanic Garden, 230 Quail Gardens Drive, Encinitas, CA.
INFO: Brita Miller – eventcoordinator@palomarcactus.org



VOLUNTEER JOBS - 2019 SHOW AND SALE - Submitted by Nancy Jengo

Dear Society Members: This is a description of the available jobs for the upcoming Show and Sale April 6th and 7th. Please read it over before our next meeting, as we will spend much of the meeting getting volunteers assigned to the various jobs. For information or to sign up for a time slot contact: Nancy Jengo, 310-378-5523 or njjengo@gmail.com.

FRIDAY SETUP

Arrive Friday, April 5th at 1:00 to help arrange the tables and chairs. They will already be unfolded and out of the closet. Help put up signs and assist in the organization of show materials.

KITCHEN ORGANIZERS and SERVERS

There will be several shifts, Saturday and Sunday. Morning needs to keep the hot water and coffee flowing. Arrange the kitchen for breakfast bagels, etc. Put out snacks. Around 11:00 start arranging the lunch for volunteers and vendors. Put out utensils, plates, etc. Clean up after lunch. Late Saturday put leftovers in the refrigerator for Sunday.

TAG PULLERS

We need many people to help pull tags in different shifts. Tags are in the plants the buyers are purchasing. Pullers need to pull the tags, count them and make sure that number matches the number of plants to be purchased

HOSPITALITY/ T-SHIRTS

Volunteers will help with new memberships or sell T-shirts or help with ballots for favorite Show table. You also will answer general questions and direct the public to the Show plants in the classrooms.

SOCIETY SALE TABLE

This is our society's sale table. These are plants society members have donated. We need volunteers to help keep an eye on the plants. Answer general questions about the plants and keep table looking nice.

PRESALE PLANT HOLDING AREA

These volunteers will help watch that buyers only take their plants and not pick and choose from other people's plants in the holding area. This can be a sitting job.

SOCIETY SHOW PLANT TABLE

The table needs to be set up with tablecloths and plant tags by Friday afternoon. (All are provided by the society.) Members can bring in their plants starting Friday afternoon. Saturday morning help arrange the plants on the table and make sure they are pest free.

CLEAN UP

At 4 PM Sunday we close the show/sale. We need volunteers to help take down signs, clean off tables, sweep and general clean up. Tables and chairs will be left in place. Garden personnel will take care of those.

! NOTICES !

South Bay Bromeliad Spring Sale

Saturday March 9, 2019, 10am - 3pm.
 Live Arts Plantscapes nursery,
 1329 W 130th street, Gardena, CA 90247.
 The sale will feature plants from members' private

collections, and commercial vendors.
 Free parking is available on site and on the street
 around the nursery.
 For information contact Ted Johnson at 310-850-2824
 or Larry Labeling at 424-396-3512.



BOARD OF DIRECTORS FY2017-2018

Officers:

| | |
|----------------|-----------------|
| President | Maria Capaldo |
| Vice President | M.A. Bjarkman |
| Secretary | Sue Wong |
| Treasurer | Bernard Johnson |

At Large Board Members:

David Hodgson, Clif Wong, Caitlin Rubia

Standing Committee Chairs:

| | |
|----------------|---------------|
| Communications | Mike Short |
| Finance | Jim Hanna |
| Membership | Sally Fasteau |
| Programs | Gary Duke |
| Show and Sale | Carol Knight |

Committee Members (Tasked):

| | |
|-----------------------|--------------|
| Mini-Show Coordinator | Jim Tanner |
| Publicity (Show) | Anita Caplan |
| Publicity (Monthly) | Ann Nye |
| Speaker Coordinator | Jade Neely |

Liasons:

| | |
|------|---------------|
| CGCI | Lou Hagemeyer |
| CSSA | Bill Wilk |

Other Positions:

| | |
|--------------------------|--------------------------------|
| Facebook | Laurel Woodley |
| Hospitality/Refreshments | Maria Blas, Debby Hemingway |
| Newsletter/Webmaster | Mike Short |
| Plant Man | Jim Hanna |

Editor's Corner



Thanks to Jade Neely and Gary Duke for supplying the Presenter of the Month material. Thanks to Jim Tanner for supplying the Mini-Show and Plant of the Month material. Thanks to Jim Hanna and all for supplying the POM lists.

Mini-Show winners can request the original (full size) photo of their plant by emailing Mike Short stating either the size and format required or how you intend to use it (1080 computer screen, TV, 4 x 6 print, etc.).

Contributions to the newsletter are encouraged, especially articles of an educational nature.

Also information on upcoming events that might be of interest to club members are welcomed. Humorous articles, photos, cartoons, or poetry also welcomed. Materials supplied for the newsletter ought to be legally usable, there should not be any copyright infringement. We can attach attributions when required, usually the owner's name, the origin of the material, and any license involved. Attribution is often required for photos on the web, like those covered by "Wikimedia Commons" licenses. Please supply any required information along with the material submitted.

Mike Short - Editor.