

New Time Times

NEWSLETTER OF THE
SOUTH COAST CACTUS AND SUCCULENT SOCIETY

MAY 1984

NEW DAY! Just this month we meet one week early -
SUNDAY, MAY 6, 1984

NEW PLACE! It's at South Coast Botanic Garden, 26300
Crenshaw Plvd., Palos Verdes Peninsula

BUT

We'll meet in the SEMINAR ROOM behind the
ticket booth - NOT in the auditorium
classrooms.

All this is because Fiesta de Flores - the yearly S. C. Botanic Garden
show, sale and money-raiser - falls on our regular meeting day, so we
were bumped up a week. However, the Bromeliad Society also meets on
May 6 - it's their regular meeting day - so they get the classrooms.

TIME! The BOARD MEETING begins at 1:00 with the regular meeting
beginning around 1:30. We must be out at 4:00. Everyone is
invited to participate in the board meeting, but COMMITTEE AND
SHOW CHAIRPERSONS MUST BE THERE! This is our last meeting before
the show.

PROGRAM Slides of previous shows will be shown.

PLANT OF THE MONTH None, but we will talk about preparing plants
for the show.

NOTE * NO BRAGGING TABLE, NO SALE PLANTS, NO PLANTS AT ALL can enter the
seminar room. Leave your pretties at home. The management has
spoken! Not all our plant pets are housebroken, and we'll be in
carpeted and furnished rooms.

REFRESHMENTS? Yes! Thanks in advance to Bea Gonzales, Dorothy Herrera,
Carol Kennedy, and Dorothy McArthur who'll join Verna
McCarty. The seminar room has an adjacent kitchen.

SHOW BIZ Our Show and Sale is also at a new time - June 16 & 17! Most
of us already have our show Division and Classification sheet + the written
info. on preparing plants for show and sale, but if you missed yours, Carol
Kennedy will have them available Sunday. Don't forget to ready your sale
donation plants.

FROM NORMA We have new members to add to the roster. A big welcome to:

Elizabeth Adams (Betty)

Mary McFarland

James Osborne

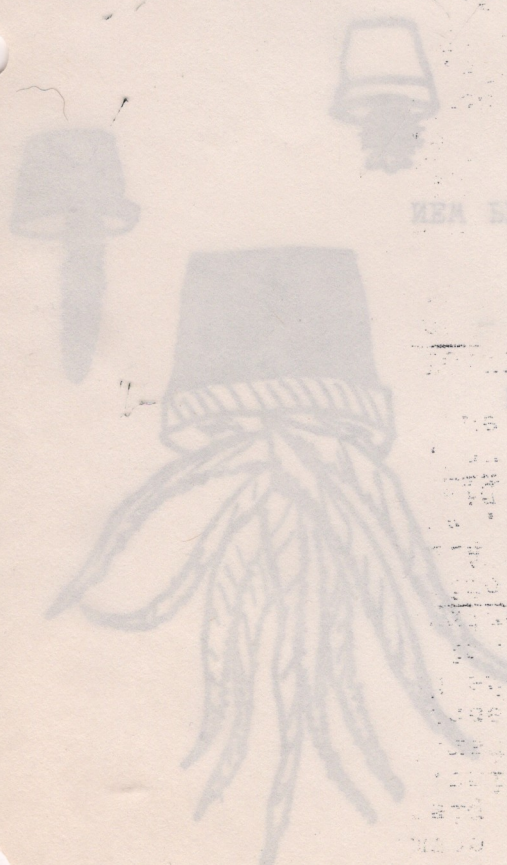
HELP! We need your extra slides for the film library. Norma Holley reports none were submitted last month. Please label slides as completely as possible. See Norma on Sunday or send slides to her. THANK YOU!

BADGES Norma also asks members to check over their name badges; and if they are missing or decrepit, let Norma know. We need our badges for the June Show/Sale.

DRAWINGS THIS MONTH ARE BY CATHY FLEMING. THANK YOU!

Editor: Carol Wujcik,

NOTE! The extended newsletter has been deemed too costly so it'll be 1 or 2 pages in the future - thus saving money and also time.



[Faint, mirrored text from the reverse side of the page, including words like 'MEMBER', 'DRAWINGS', and 'NOTICE', is visible through the paper.]

Want to learn more about CACTUS and other SUCCULENTS?

Come to our MEETINGS!

The South Coast Cactus and Succulent Society was formed April 9th, 1972, with a meeting of many enthusiasts at the South Coast Botanic Garden.

Did you know that Cacti are native only to the Americas? This and many other questions may be answered by attending our meetings, which are held the second Sunday of each month at 1:30 P.M. in the clubroom (adjacent to auditorium) of the South Coast Botanic Garden, 26300 Crenshaw Blvd., Palos Verdes Peninsula, Ca. 90274 Ph. 377-0468

Its educational efforts are dedicated to the beginner, the grower, the amateur, and the gardener. The Society is a non-profit organization with the objectives of providing its members with the greatest amount of service for the least money as well as encouraging all horticultural activities by example, education, exhibits, gardening, field trip, and donations.

Services that the Society provides for its members include:

Newsletter: Sent to all members every month to notify them of programs, meetings, and other activities of the Society, as well as news items about members and other helpful information.

Meetings: For those who attend, a wonderful educational meeting with refreshments, plant table, plant of the month, and a place to show off your bragging plants; also, a place to take ailing plants to find help for them.

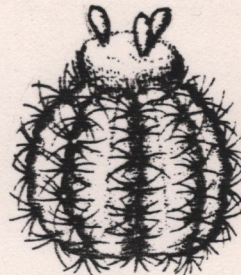
Annual Cacti and Succulent Show/Sale: A unique awards show featuring the rare, the beautiful, and the bizarre of the plant world. Open to all who wish to enter.

Our Cactus Garden: Designed, planted, and cared for by the club members. Working in The Garden away from home is amazing, fun, inspiring, and rewarding in many ways.

Roster: Given annually to members with name, addresses, individual plant interests, and other related fields.

Interested in becoming a member, see our membership application. Membership chairperson is

Norma L. Holley



Cephalium in *Melocactus violaceus*. This formation produces flowers and fruits; other parts are immature and cannot flower.



Flowers in *Graptopetalum (G. bartramii)* are wide open and decorated with colourful dots.



Succulents such as *Cyphostemma* have thickened stems making a natural bonsai shape.



The aerophytic *Tillandsia* have a reduced root system. water and nutrients are supplied through the hygroscopic leaf surface.

A wide leaf rosette (*Hechtia rosea*) is the typical growth formation in succulent bromeliads.

Plant drawings by J. Masek
The Illustrated Encyclopedia of Cacti and Other Succulents By J. Riha & R. Subik

What is a CACTUS or other SUCCULENT?

A cactus is a succulent plant that has the natural ability to store moisture in their trunks and spines for protection from the sun. Cacti possess one definitive characteristic which distinguishes them from all other succulents - a hairy, tufted spine cushion or areole, and belong only to the Cactaceae family. All Cacti are succulents but not all Succulents are cacti.

Succulent plants have fleshy water-retaining tissue often protected in some way from the scorching effects of the sun. They do not belong to any one plant family, but are represented in nearly thirty different ones. There are succulents in the Lily and Amaryllis families, the Daisy and Milkweed clan and even among the Geraniums.

Cacti and Succulents are an incredibly diverse group of plants. They are found everywhere from tropical regions to within the Arctic circle, & occur in comparatively dry habitat. At maturity, these plants can range from under one inch to well over fifty feet tall. They do require less care than most other plants.

Furthermore, Cacti and Succulents often are among the few plants that thrive in today's centrally cooled & heated homes. They are able to survive in a variety of environments because their stems, leaves or roots can hold large amounts of water over long periods of time. They grow well in our area, whether in pots or in the ground, but they must have very good drainage as they will rot in soggy soils.

For more information about these plants, visit our meetings at 1:30 P. M. the second Sunday of each month in the clubroom (adjacent to auditorium) of the South Coast Botanic Garden, 26300 Crenshaw Blvd., Palos Verdes Peninsula, Ca. 90274 Phone: 377-0468

Interested in becoming a member of The South Coast Cactus and Succulent Society, see our membership application. Membership chairperson is

Norma L. Holley



Flower and bud in Echeveria.



Plant drawings by J. Masek
The Illustrated Encyclopedia of Cacti
and Other Succulents
By J. Riha & R. Subik



In bonsai shaping, for example in *Bursera microphylla*, long shoots have to be cut off.

