

Click here to visit our web site:
<http://www.southcoastcss.org>

Click here to visit
 our Facebook page

NEXT MEETING
Show & Sale
Saturday April 8 and Sunday April 9
9:00 am - 4:00 pm

REFRESHMENTS FOR APRIL
 Thanks to those who helped in March:

Rose Arbuckle	Phyllis DeCrescenzo
M. A. Bjarkman	Cheryl Seiver
Carol Causey	Karen Yoshioka
Karin Cozzolino	

Please bring a potluck dish to share with the vendors and volunteers in the show, by 11:30 (11:00 if it needs to be heated). Please report to Carol Causey in the kitchen with your dish.

Kitchen Volunteers – needed for Saturday and Sunday after lunch to help with cleanup. Please contact Carol in the kitchen.

SHOWTIME

IN THIS ISSUE

PRESIDENTS MESSAGE.....1
REFRESHMENTS.....1
! NOTICES !.....2
MINI-SHOW RESULTS.....2
MINI-SHOW STANDINGS.....2
MINI-SHOW PLANTS 2017.....3
MINI-SHOW PLANTS 2018.....3
BOTANICAL GLOSSARY.....3
MEMBERSHIP NEWS.....4
MEMBER'S GARDENS.....4
CALENDAR OF UPCOMING EVENTS.....5
BOARD OF DIRECTORS.....6



PRESIDENT'S MESSAGE

IT'S SHOW TIME! This year Heidi Husnak is in-charge of our annual Show and Sale. I look forward to another successful event. Here are a few last minute reminders:

1) Bring plants for the Club Show table between 1:00 and 4:00 PM on Friday. Print legibly on the entry slips. The Table Coordinator will give all plants a "health" check and, if there are too many of one specie, the best one will get the space. Although there is no limit on the number of plants you may bring in, and no limit on the number shown, you receive one mini-show point per plant up to a maximum of four points. Please pick up your plants after 4:00 PM Sunday. If you cannot pick up the plants, someone will keep them for you. [Ed: but please realize it will necessitate someone having to take them home and care for them.]

2) If you are volunteering at the show on Saturday morning, please come before 8:30 AM. REMEMBER . . . parking may not be as usual. Plant drop off on Friday probably won't be an issue other than congested near the door, but if you come after mid-morning on the weekend, you may be asked to park at an off-site location.

3) Members should bring their potluck lunch contribution to the kitchen by 11:30 AM on Saturday, or 11:00 am if it needs to be heated. We provide lunch for vendors and Society volunteers and appreciate your wonderful help.

4) When you arrive, please sign-in at the Hospitality Table. Wear your badge so that visitors can identify you as a Society member. And if you have a club apron, wear it also.

5) As usual, we will have two categories of display tables set up by vendors and Society members. They can be either "Specimen" to show individual plants, or "Artistic" to show succulent plants in an artistic way in any medium. We ask visitors (including members) to vote for their favorites. It's just a personal choice.

6) If you are not volunteering at the event, I encourage you to bring a friend and a camera, as there certainly will be many plants worthy of a photo. I also suggest you bring a list of the plants in your collection and perhaps a few species you might like to add.

And finally, even though elections are not until June, we already have our Nominating Committee in place with Jim Gardner as Chair. In the event that committee members contact you, please give serious thought to their request.

Dale La Forest,
 President



! NOTICES !

SCCSS Show & Sale Helpers

If you wish to sign up for a task at the Show, or you have any questions about a task you have signed up for, please email Heidi Husnak at hhusnak@gmail.com

SCCSS Show & Sale Plants (repeat)

This year we thought we'd try to have a table at our April Show and Sale to sell plants that were donated by members of the club to increase our revenue. So, if you have plants that are extras, or cuttings that can be planted now, please donate them to our cause. If you can nurse them yourself until the Show and Sale that would be great. But if space is a problem, bring cuttings or plants in to the meetings and give to Maria Capaldo who will pot them or nurse them for the club. If you have a full name for the plant, please be sure that is included.

MINI-SHOW RESULTS - March 12, 2017

Open Cactus	1st	Gary Duke	<i>Echinocactus horizonthalonius</i>
	2nd	Gary Duke	<i>Echinocactus texensis</i>
	3rd	Maria Capaldo	<i>Echinocactus horizonthalonius</i>
Open Succulent	1st	Jim Hanna	<i>Agave victoriae-reginae</i> 'White Rhino'
	2nd	Jim Gardner	<i>Mangave</i> 'Kaleidoscope'
	2nd	Jim Gardner	<i>Mangave</i> 'Pineapple Express'
	3rd	Maria Capaldo	<i>Agave victoriae-reginae aurea</i>
	3rd	Gary Duke	<i>Agave albopilosa</i>
Intermediate Cactus	1st	Jade Neely	<i>Echinocactus texensis</i>
	2nd	William Wilk	<i>Echinocactus grusonii</i>
	3rd	Anita Caplan	<i>Echinocactus grusonii</i>
Intermediate Succulent	1st	Jade Neely	<i>Agave</i> 'Royal Spine'
	2nd	William Wilk	<i>Agave</i> 'Kissho kan'
	3rd	Jim Wood	<i>Agave titanota</i> 'White Ice'
Novice Cactus	1st	Bernard Johnson	<i>Echinocactus palmeri</i>
Novice Succulent	1st	Bernard Johnson	<i>Agave</i> 'Cubic'
	2nd	Sally Fasteau	<i>Agave applanata</i> 'Cream Spike'
	2nd	Jim Tanner	<i>Agave schidigera</i> 'Shira ito no Ohi'
	3rd	Sally Fasteau	<i>Agave</i> 'Kichijokan'
	3rd	Jim Tanner	<i>Agave</i> 'Little Shark'

[Click here for photos of the winning plants on our website](#)

SCCSS MINI-SHOW STANDINGS (as of March 12, 2017)

Open Class	Cactus	Succulent	Total
Capaldo, Maria	13	7	20
Duke, Gary	29	14	43
Gardner, Jim		17	17
Hanna, Jim		22	22
Woodley, Laurel		11	11

Novice Class	Cactus	Succulent	Total
Bjarkman, M.A.	2	2	4
Bjerke, Martha		2	2
Fasteau, Sally	18	30	48
Johnson, Bernard	13	14	27
Straub, Terri	7		7
Tanner, Jim		16	16
Unrine, Judy		4	4

Intermediate Class	Cactus	Succulent	Total
Caplan, Anita	9	9	18
DeCrescenzo, Phyllis	12	15	27
LaForest, Dale	13	3	16
Neely, Jade	8	8	16
Short, Mike	4	15	19
Wilk, William	17	20	37
Wood, Jim	9	7	16

[Click here to see the standings on our website](#)

MINI-SHOW PLANTS OF THE MONTH (POM) 2017

	Cactus	Succulent
April	SHOW & SALE	
May	Mammillaria (clumping)	Euphorbia (African, not from Madagascar)
June	Opuntia, Tephrocactus	Cissus, Cyphostemma
July	Epiphytic Cactus	<i>Click here to see complete lists on our website</i>
August	Ariocarpus	
September	Astrophytum	Adenium & Adenia
October	Copiapoa	Lithops, Conophytum
November	Crest and Monstrose	Variegated
December	HOLIDAY PARTY	

MINI-SHOW PLANTS OF THE MONTH (POM) 2018

	Cactus	Succulent
January	Mammillaria - Hooked Spines	Kalanchoe
February	Variegated Cacti	Euphorbia with Caudex
March	Crested / Monstrose	Dudleya
May	Opuntia, Tephrocactus	Tylecodon
June	Gymnocalycium	Pachypodium
July	Lobivia / Echinopsis	Senecio

BOTANICAL GLOSSARY

Here is the next part of our attempt at a dictionary of botanical terms, more to follow later.

PALMATE - flat and lobed.

PANICLE - a compound inflorescence in which the main axis bears lateral racemes or spikes.

PAPILLA - a small soft superficial gland or protuberance.

PAPILLATE - having papillae.

PAPILLOSE - covered with papillae.

PARIETAL - used of the attachment of ovules to the outer walls of the ovaries.

PEDICEL - the stalk of the flower.

PEDUNCLE - the axis from which the flower pedicel arises.

PELLUCID - Admitting the passage of light; transparent or translucent.

PELTATE - with the petiole attached to the lower surface of the leaf blade.

PENDENT - hanging down.

PERENNIAL - a plant that continues its life cycle for more than two years.

PERIANTH - the two outer whorls of the Angiosperm flower; when the calyx and the corolla are not readily distinguishable.

PERSISTENT - remaining attached to the plant, opposed to deciduous.

PETIOLE - the stalks of the leaf.

PHYLLOPODIA - persistent leaf bases present in some members of the crassulaceae.

PINNATIFID - a pinnately parted leaf, dividing almost to the midrib.

PLACENTA - the organ that bears the ovules in the ovary.

PLACENTATION - refers to the arrangement of the placentae and ovules in the ovary.

POLLINIA - the paired, waxy pollen masses of the stapeliae.

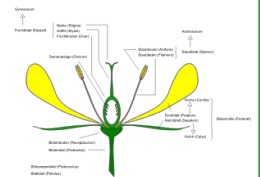
PROCUMBENT - trailing on the ground without rooting.

PROSTATE - flat on the ground.

PRUINOSE - having a waxy, powdery 'bloom'.

PUBERULOUS - covered with a minute down.

PUBESCENT - covered with short soft hairs.



MEMBERSHIP NEWS

Please welcome new members:

[Kitching Ambrosia](#)

[Diane Moos from Seal Beach](#)

[Mary Watson from Torrance](#)

MEMBER'S GARDENS - *Lynda Johnson - Another Succulent Saga*

Who would buy a house for her succulents? Yup, guilty ... Let me explain.

I've been growing these remarkable plants for almost 30 years, ever since receiving hundreds of free plants from an acquaintance who didn't want them. They were happily planted at my newly purchased home in Covina and over the years I became a fan.

When I moved into a townhouse in Redondo Beach in 2001, many of those plants had to be left behind. Over the next 13 years, the hundred or so that had moved with me reproduced. When my tiny yard was full up I continued planting in the common areas of the building complex. But still they kept growing and after 12 years of a townhouse, the crazy decision was made to return to home ownership, acknowledging that my gardening hobby was not retired even if I was.

The new home was in great shape but the back yard was a concrete basketball court, a blank canvas just asking to be filled with plants. Over 300 of my favorites were moved two miles to Torrance after digging them out of my old yard and the common areas. Don't worry, they were replaced with other plants. For the next seven months, the back yard looked like a nursery, with plants in rows on the concrete. In 2014, a designer and a contractor were selected. There were major drainage problems to be resolved and tons of concrete and adobe soil to be removed. New soil was trucked in, a sprinkler system was installed, and decomposed granite pathways were laid. A hole was dug for a dry riverbed, which my sister filled with rocks (her passion). Now it was finally time to plant!

That was three years ago. The garden has grown and changed since then, as plants filled in and more were added. I joined the Cactus and Succulent Society about five years ago for the specific purpose of giving away excess plants and cuttings. Now my garden is sufficiently established so I can again bring cuttings to the meetings to share with members looking to expand their own collections.



Rear before



Rear after

Oh yes, one more thing. In the fall of 2015, I decided to demolish my front yard lawn and plant succulents there as well. A rebate offered for removing the turf was a motivating factor. The plan, which I designed myself this time, included eliminating a portion of the driveway. My contractor removed 18 inches of adobe soil, installed a new sprinkler system, laid walkway pavers, and added new soil. Again, a blank canvas. I had enough plants waiting for a home that I could landscape the front yard at no additional cost.

Now that the entire property is planted in succulents you will see lots of free cuttings from me at future meetings. Those plants received in 1988 are still “paying it forward”.



Front before



Front after



[Ed: Many thanks Lynda for the excellent article and the beautiful photographs. And congratulations for creating a superb garden, you are a landscape artist! Remember, anyone interested in submitting an article about a garden please contact me. I take care of layout and can assist with content if required.]

CALENDAR OF UPCOMING EVENTS FOR 2017

- MAR. 23-25** **Orange County Cactus & Succulent Society - Spring Show & Sale**
 Thurs. 23rd 6-8pm, Fri. Mar. 24th 9am-7pm---Sat. Mar. 25th 9am-5pm
 1000 S. State College Bl., (Anaheim United Methodist Church) Anaheim, CA. INFO: Call 562-587-3357
- APR. 8-9** **South Coast Cactus & Succulent Society – Annual Show & Sale**
 South Coast Botanic Garden, 26300 Crenshaw Blvd., Palos Verdes, CA.
 INFO: 310-378-1953 <http://www.southcoastess.org>
- APR. 21** **South Bay Orchid Society – First Annual Orchid Auction**
 Preview 6:30pm, Auction 7-10pm, South Coast Botanic Garden, www.southbayorchidsociety.com
- APR. 28-30** **Huntington Plant Sale.** Members: April 28–29, Friday–Saturday, 10 a.m.–5 p.m.
 Public Sale: April 30, Sunday, 1–5 p.m.
 Huntington Botanical Gardens, 1151 Oxford Road, San Marino, CA. 626-405-3504

Click here to see the calendar on our website

- MAY 6-7 **Sunset Cactus & Succulent Society - Show & Sale**
Veterans Memorial Center, Garden Room, 4117 Overland Ave., Culver City, CA. INFO: 310-822-1783
- MAY 7 **South Bay Epiphyllum Society - Show & Sale.**
9am to 4pm. South Coast Botanic Garden. INFO: 310-833-6823
- MAY 12-13 **Gates Cactus & Succulent Society - 42nd Show & Sale**
Fri & Sat 9am-4:00pm. At Landscapes Southern California Style
450 E. Alessandro Blvd., Riverside, CA INFO: 909-626-4197
- MAY 20-21 **Long Beach Cactus Club - Plant Show & Sale**
10am-4pm. Rancho Los Alamitos, 6400 Bixby Hill Road, Long Beach, CA. INFO: 562-631-5876
- MAY 27-28 **Central Coast Cactus & Succulent Society - Annual Show & Sale**
10am-4pm. Ludwick Center, 864 Santa Rosa, San Luis Obispo, CA.
INFO: 805-237-2054, <http://www.centralcoastcactus.org>
- JUNE 3-4 **San Diego Cactus & Succulent Society – Summer Show & Sale**
Balboa Park, Room 101, San Diego, CA. INFO: 858-382-1797
- JUNE 10-11 **Los Angeles Cactus & Succulent Society - Plant Show & Sale**
June 10th, 9am–4pm June 11th, 9am-3pm
Sepulveda Garden Center, 16633 Magnolia Blvd., Encino, CA. INFO: <http://www.lgcss-show.com>
- JUNE 30-JULY 2 **CSSA Annual Show & Sale**
Huntington Botanical Gardens. 1151 Oxford Road, San Marino, CA. INFO: 626-405-3504
Plant Sale June 30th thru July 2nd 10am to 5pm. Show open July 1st thru July 2nd 10am to 5pm.
- JULY 20-22 **Orange County Cactus & Succulent Society - Summer Show & Sale.**
Thurs. July 20th 6-8pm, Fri. 21st 9am-7pm, Sat. 22nd 9am-5pm
1000 S. State College Bl., (Anaheim United Methodist Church) Anaheim, CA. INFO: Call 949-212-8417
- JULY 26-31 **CSSA Convention, Tempe, AZ.**
- AUG. 12-13 **32nd Annual Intercity Show & Sale**
9am-5pm Daily. LA County Arboretum, 301 No. Baldwin Ave., Arcadia, CA.
INFO: Call Tom Glavich 626-798-2430 or Artie Chavez 818-482-8795
- SEP. 2 **Huntington Botanical Gardens - Succulent Symposium**
All day at the Huntington 626-405-3504
- SEP. 17 **Long Beach Cactus Club - Annual Plant Auction**
12pm-5pm. Rancho Los Alamitos, 6400 Bixby Hill Road, Long Beach, CA 90615, INFO: 562-631-5876
- OCT. 7-8 **Bakersfield Cactus & Succulent Society - Show & Sale**
Sat 10am-5pm - Sun 11am-3pm. St. Paul's Church, 2216 17th Street, Bakersfield, CA 93304
Free Admission & Parking, INFO: 661-8318488
- OCT. 28 -29 **Palomar Show & Sale**
Sat 9am-5pm, Sun 10am-4pm, San Diego Botanic Gardens, 230 Quail Gardens Road, Encinitas, CA.
INFO: heiservices@gmail.com. 858-382-1797
- NOV. 4-5 **San Gabriel Cactus & Succulent Society - Show & Sale**
9am-4pm Both Days. LA County Arboretum 310 No. Baldwin, Arcadia, CA.
Manny Rivera 626-780-6957 Or John Matthews 661-714-1052

BOARD OF DIRECTORS FY2016-2017

Officers:

President	Dale La Forest
Vice President	M.A. Bjarkman
Treasurer	Bernard Johnson
Secretary	Maria Capaldo

Liaisons:	CGCI	Lou Hagemeyer
	CSSA	Bill Wilk

At Large Members:	Anita Caplan
	Bob Caplan
	Martha Bjerke

Standing Committee Chairs:

Refreshments Committee	Carol Causey
Programs Committee	Gary Duke
Membership Committee	Sally Fasteau
Finance Committee	Jim Hanna
Show & Sale Committee	Heidi Husnak
Communication Committee	Mike Short

Other Positions:

Newsletter	Mike Short
Webmaster	Mike Short
Facebook	Laurel Woodley