

# Prickly News

South Coast Cactus & Succulent Society Newsletter

January 2017

Click here to visit our web site:  
<http://www.southcoastcss.org>

Click here to visit our Facebook page

## NEXT MEETING

**Marquita Ellias: The Canary Islands - They're out of this world!**

**Sunday January 8, at 1:00 pm  
(Program starts at 1:30pm)**

## REFRESHMENTS FOR JANUARY

Thanks to those who helped in December.

Volunteers for January refreshments are:

**None**

If you would like to bring something to our next meeting please do so - thanks!

**Kitchen Volunteers** – Please see Carol Causey after the meeting if you are able to help with cleanup.



## PRESIDENT'S MESSAGE

**A**ttendance at our holiday potluck was about 66 members. As usual the potluck dishes were fantastic. Thanks to M.A. Bjarkman, Maria Capaldo, Phyllis DeCrescenzo, Carol Causey and many others for organizing the event and decorating the tables. The holiday potluck is one of the few times during the year when we have time to get to know each other with extended

conversation, rather than our ritualized, "Hi, how are you?" Did you appreciate the half-hour social hour before we started the buffet line? If you have comments please send them to M.A.

About a dozen members brought in their 2016 Annual Plant, *Mammillaria zeilmanniana*. Of the dozen plants brought in, I was the only one to admit I killed it. Gary Duke, who judged the entries, commented mine was the only one that shrunk :-). Can I assume the rest of you either killed it too, or couldn't find it? If you didn't pick up your free Annual Plant for 2017, *Pachypodium saundersii* at the potluck, the remaining plants will be available in January. We request that you personally come to the January meeting to choose your plant from those remaining.

Our Membership Committee Chair, Sally Fasteau, has new magnetic name badges for us. Because of their expense, the Board decided to purchase them for members who regularly attend meetings. We will have badges made for new members after they begin to attend meetings regularly. If you lose your badge and want a new one, please contact Sally and she will tell you where you may purchase a new one.

We added about 30 new members this year. That was about the same number who chose not to renew. So, on average our society's membership is pretty stable at about 120 members with half attending meetings. I look forward with the Board to another successful year and several new speakers.

Dale La Forest, President



## IN THIS ISSUE

<b>PRESIDENTS MESSAGE</b>	<b>1</b>
<b>REFRESHMENTS</b>	<b>1</b>
<b>PRESENTER FOR THE MONTH</b>	<b>2</b>
<b>CACTUS OF THE MONTH</b>	<b>2</b>
<b>SUCCULENT OF THE MONTH</b>	<b>3</b>
<b>MINI-SHOW PLANTS 2017</b>	<b>4</b>
<b>SCCSS SHOW &amp; SALE PLANTS</b>	<b>4</b>
<b>CALENDAR OF UPCOMING EVENTS</b>	<b>6</b>
<b>BOARD OF DIRECTORS</b>	<b>7</b>



## Desert Forum at the Huntington

Sat, 14 January.

See the hot-house full of amazing specimen plants. Wander through the Aloes, many in bloom. Visit the sale area in the propagation greenhouses later on for the opportunity to buy some special plants.. Retain your badge when you leave the meeting on Jan 8th for free entry before 9:45am. See the calendar below.

## Presenter for January: Marquita Ellias - The Canary Islands - They're out of this World!

Marquita Ellias will take the audience to space and then return them to the Canary Islands to witness adaptive radiation first hand. The program will include indigenous plants including Aeoniums, Euphorbia, Ceropogia, Caralluma and other Canarian

natives. The presentation will include six of the seven major islands in this archipelago and will demonstrate the climatic diversity of these islands. Included in this presentation are pirates, Christopher Columbus and mealy bugs.

Marquita is a member of CSSA and a member of LACSS for six years and has been scheduling programs for four of those years. The last year has been busy forming the new Conejo Cactus and Succulent Society serving the Ventura County area. As a California native, born in Anaheim, she received her degree in Civil Engineering from Loyola Marymount University and also attended Scripps Institute of Oceanography. She worked as a Registered Civil Engineer for over 20 years with a portion of that time spent underwater as a hardhat diver. She spends her time helping with their family construction business, hiking, mountain biking and tending her collection of aeoniums and adeniums.



### Cactus of the Month: *Parodia* / *Notocactus* Submitted by Jim Tanner

[Click to see the same with more photos on our website](#)

[Ed: A plant that was acquired as *Notocactus* is treated as *Parodia* within this article. Either name will be accepted at the Mini-Show.]

**P**arodia is a genus of flowering plants in the cactus family Cactaceae, native to the uplands of Argentina, Peru, Bolivia, Brazil, Colombia and Uruguay. This genus has about 50 species, many of which have been transferred from *Eriocactus*, *Notocactus* and *Wigginsia*. They range from small globose plants to 1 m (3 ft) tall columnar cacti. All are deeply ribbed and spiny, with single flowers at or near the crown. Some species produce offsets at the base. They are popular in cultivation, but must be grown indoors where temperatures fall below 10 °C (50 °F). The genus is named after Domingo Parodi, one of the early investigators of the flora of Paraguay.



*Parodia concinna*



*Parodia haselbergii*



*Parodia horstii*





*Parodia leninghausii*



*Parodia mueller-melchersii*

**Succulent of the Month: Aloe Submitted by Jim Tanner**

**A**loe, is a genus containing about four hundred species of flowering succulent plants. The most common and well known of these is Aloe vera, or “true aloe”.

The genus is native to Africa, and is common in South Africa’s Cape Province, the mountains of tropical Africa, and neighbouring areas such as Madagascar, the Arabian peninsula, and the islands off Africa.

The APG II system (Angiosperm Phylogeny Group II system)(2003) placed the genus in the family Asphodelaceae. In the past it has also been assigned to families Aloaceae and Liliaceae or lilly family. Members of the closely allied genera Gasteria, Haworthia and Kniphofia, which have a similar mode of growth, are also popularly known as aloes.

Most Aloe species have a rosette of large, thick, fleshy leaves. The leaves are often lance-shaped with a sharp apex and a spiny margin. Aloe flowers are tubular, frequently yellow, pink or red and are borne on densely clustered, simple or branched leafless stems.

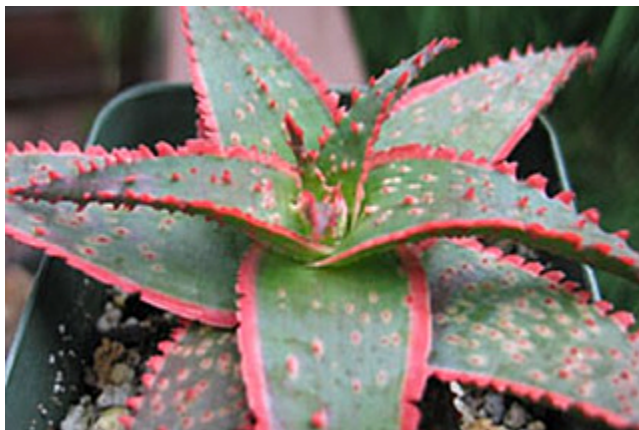
Many species of Aloe appear to be stemless, with the rosette growing directly at ground level; other varieties may have a branched or unbranched stem from which the fleshy leaves spring. They vary in color from grey to bright-green and are sometimes striped or mottled. Some Aloes native to South Africa are arborescent.

Aloe species are frequently cultivated as ornamental plants both in gardens and in pots. Many Aloe species are highly decorative and are valued by collectors of succulents.

[Click to see the same with more photos on our website](#)



*Aloe brevifolia variegata*



Aloe 'Christmas Carol'



*Aloe castilloniae*





*Aloe variegata*



*Aloe pictifolia hybrid*



Aloe 'Jeff Karsner'

### SCCSS Show and Sale Plants

This year we thought we'd try to have a table at our April Show and Sale to sell plants that were donated by members of the club to increase our revenue. So, if you have plants that are extras, or cuttings that can be planted now, please donate them to our cause. If you can nurse them yourself until the Show and Sale that would be great. But if space is a problem, bring cuttings or plants in to the meetings and give to Maria Capaldo who will pot them or nurse them for the club. If you have a full name for the plant, please be sure that is included.



### MINI-SHOW PLANTS OF THE MONTH (POM) 2017

	Cactus	Succulent
January	Notocactus, Parodia	Aloe
February	Melocactus	Haworthia, Astroloba
March	Echinocactus	Agave
April	SHOW & SALE	
May	Mammillaria (clumping)	Euphorbia (African, not from Madagascar)
June	Opuntia, Tephrocactus	Cissus, Cyphostemma
July	Epiphytic Cactus	Bromeliaceae (other than Tillandsia)
August	Ariocarpus	Sedum, Pachyphytum, Sempervivum
September	Astrophytum	Adenium & Adenia
October	Copiapoa	Lithops, Conophytum
November	Crest and Monstrose	Variegated
December	HOLIDAY PARTY	

## CALENDAR OF UPCOMING EVENTS FOR 2017

- JAN 14      **Huntington Desert Forum 2017**  
1151 Oxford Road, San Marino, California 91108 (626) 405-2100  
**9:00 – 9:45 Registration** - Please bring your CSSA or affiliated club badge or membership card for admission. To receive free admission, you must arrive by 9:45. Late arrivers will need to pay for Huntington admission.  
**9:00 – 11:00 Desert Garden** - Knowledgeable staff and docents will be stationed throughout the Desert Garden and Desert Conservatory. Aloes will be flowering.  
**11:00 – 1:00 Plant Sales** – (exclusively for CSSA and club members) Gate opens by the Teaching Greenhouse at 11:00 for plant sales - please, no early bird shopping, and no shopping after 1:00. Cash, checks, and credit cards.  
**1:00 – 5:00 Free Time** - Attendees are welcome to tour the gardens and galleries as of 10:00 am  
**Lunch:**            The Café in the visitor center features a variety of sandwiches, salads, and grilled items  
                         The tea room at Liu Fang Yuan is a nice option for fresh Chinese food  
                         The coffee shop by the bookstore offers a small selection of pre-made options
- FEB. 11      **San Diego Cactus & Succulent Society - Spring Show & Sale**  
Balboa Park, Room 101, San Diego, CA. INFO: 858-382-1797
- MAR. 23-25      **Orange County Cactus & Succulent Society - Spring Show & Sale**  
Thurs. 23rd 6-8pm, Fri. Mar. 24th 9am-7pm---Sat. Mar. 25th 9am-5pm  
1000 S. State College Bl., (Anaheim United Methodist Church) Anaheim, CA  
INFO: Call 562-587-3357
- APR. 8-9      **South Coast Cactus & Succulent Society – Annual Show & Sale**  
South Coast Botanic Garden, 26300 Crenshaw Blvd., Palos Verdes, CA.  
INFO: 310-378-1953 <http://www.southcoastcss.org>
- APR. 23      **Huntington Plant Sale.** 10am To 4:30pm  
Huntington Botanical Gardens, 1151 Oxford Road, San Marino, CA. 626-405-3504
- MAY 6-7      **Sunset Cactus & Succulent Society - Show & Sale**  
Veterans Memorial Center, Garden Room  
4117 Overland Ave., Culver City, CA. INFO: 310-822-1783
- MAY 7      **South Bay Epiphyllum Society - Show & Sale.**  
9am to 4pm. South Coast Botanic Garden. INFO: 310-833-6823
- MAY 12-13      **Gates Cactus & Succulent Society - 35th Show & Sale**  
Fri & Sat 9am-4:30pm. At Landscapes Southern California Style  
450 E. Alessandro Blvd., Riverside, CA INFO: 951 -360-8802
- MAY 20-21      **Long Beach Cactus Club - Plant Show & Sale**  
10am-4pm. Rancho Los Alamitos, 6400 Bixby Hill Road, Long Beach, CA.  
INFO: 562-631-5876
- MAY 27-28      **Central Coast Cactus & Succulent Society - Annual Show & Sale**  
10am-4pm. Ludwick Center, 864 Santa Rosa, San Luis Obispo, CA.  
INFO: 805-237-2054, <http://www.centralcoastcactus.org>
- JUNE 3-4      **San Diego Cactus & Succulent Society – Summer Show & Sale**  
Balboa Park, Room 101, San Diego, CA. INFO: 858-382-1797
- JUNE 10-11      **Los Angeles Cactus & Succulent Society - Plant Show & Sale**  
June 10th, 9am–5pm June 11th, 9am-3pm  
Sepulveda Garden Center, 16633 Magnolia Blvd., Encino, CA.  
INFO: <http://www.lgcss-show.com>
- JUNE 30-JULY 2      **CSSA Annual Show & Sale**  
Huntington Botanical Gardens. 1151 Oxford Road, San Marino, CA. INFO: 626-405-3504  
Plant Sale June 30th thru July 2nd. Show open July 1st thru July 2nd.

CONT ...

- JULY 20-22 **Orange County Cactus & Succulent Society - Summer Show & Sale.**  
Thurs. July 20th 6-8pm, Fri. 21st 9am-7pm, Sat. 22nd 9am-5pm  
1000 S. State College Bl., (Anaheim United Methodist Church) Anaheim, CA.  
INFO: Call 949-212-8417
- JULY 26-31 **CSSA Convention**, Tempe, AZ.
- AUG. 12-13 **32nd Annual Intercity Show & Sale**  
9am-5pm Daily. LA County Arboretum, 301 No. Baldwin Ave., Arcadia, CA.  
INFO: Call Tom Glavich 626-798-2430 or Artie Chavez 818-482-8795
- SEP. 2 **Huntington Botanical Gardens - Succulent Symposium**  
All day at the Huntington 626-405-3504
- SEP. 3 **Long Beach Cactus Club - Annual Plant Auction**  
12am-5pm. Rancho Los Alamitos, 6400 Bixby Hill Road, Long Beach, CA 90615  
INFO: 562-631-5876
- OCT. 7-8 **Bakersfield Cactus & Succulent Society - Show & Sale**  
Sat 10am-5pm - Sun 11am-3pm. St. Paul's Church, 2216 17th Street, Bakersfield, CA 93304  
Free Admission & Parking, INFO: 661-8318488
- OCT. 28 -29 **Palomar Show & Sale**  
Sat 9am-5pm, Sun 10am-4pm, San Diego Botanic Gardens, 230 Quail Gardens Road, Encinitas, CA.  
INFO: hciservices@gmail.com. 858-382-1797
- NOV. 4-5 **San Gabriel Cactus & Succulent Society - Show & Sale**  
9am-4pm Both Days. LA County Arboretum 310 No. Baldwin, Arcadia, CA.  
Manny Rivera 626-780-6957 Or John Matthews 661-714-1052



**BOARD OF DIRECTORS FY2015-2016**

**Officers:**

- |                |                 |
|----------------|-----------------|
| President      | Dale La Forest  |
| Vice President | M.A. Bjarkman   |
| Treasurer      | Bernard Johnson |
| Secretary      | Maria Capaldo   |

- Liaisons:** CGCI Lou Hagemeyer  
CSSA Bill Wilk

- At Large Members:** Anita Caplan  
Bob Caplan  
Martha Bjerke

**Standing Committee Chairs:**

- |                         |               |
|-------------------------|---------------|
| Refreshments Committee  | Carol Causey  |
| Programs Committee      | Gary Duke     |
| Membership Committee    | Sally Fasteau |
| Finance Committee       | Jim Hanna     |
| Show & Sale Committee   | Heidi Husnak  |
| Communication Committee | Mike Short    |

**Other Positions:**

- |            |                |
|------------|----------------|
| Newsletter | Mike Short     |
| Webmaster  | Mike Short     |
| Facebook   | Laurel Woodley |