

# Prickly News

South Coast Cactus & Succulent Society Newsletter

April 2015

Click here to visit our web site:  
<http://www.southcoastcss.org>

Click here to visit our  
Facebook page

## NEXT MEETING

### Annual Show and Sale

Saturday April 11, Sunday April 12,  
9am to 4pm

We will be in the hall.

## REFRESHMENTS FOR APRIL

Thanks to those who helped in March, including:

- |                     |                |
|---------------------|----------------|
| Rose Arbuckle       | Maria Lopez    |
| Pam Carnesi         | Anna MacKenzie |
| Carol Causey        | Betty Saunders |
| Phyllis DeCrescenzo | Laurel Woodley |
| Carol Knight        | Cliftin Wong   |
| Dale LaForest       |                |

Refreshments for Show & Sale:

Please bring a side dish for the show pot luck by 11:30 AM. Then see Carol at the "show" to help with clean up.

For specific kitchen assignments see the Show task assignments document you should receive by separate email.

If you would like to bring something to our next meeting, please do so – thanks!

## IN THIS ISSUE

PRESIDENTS MESSAGE.....	1
REFRESHMENTS.....	1
ANNUAL SHOW & SALE INFO.....	1
MINI-SHOW PLANTS OF THE MONTH 2015.....	2
SPOT THE BLOOMS.....	2
MINI-SHOW RESULTS.....	3
MINI-SHOW STANDINGS.....	3
MEMBERSHIP NEWS.....	3
CALENDAR OF UPCOMING EVENTS.....	4
BOTANICAL GLOSSARY.....	5
LIGHTER SIDE.....	5
BOARD OF DIRECTORS.....	6
EDITOR'S CORNER.....	6



## PRESIDENT'S MESSAGE

IT'S SHOW TIME! I'm tempted to use the same metaphor I've used for the past couple of years for my April message . . . maybe you remember, the one about Jim Gardner being Captain of the good ship "April Show-ers". But that doesn't show much imagination and (at least from my point of view) Jim has put what could be a daunting task for a "newbie" on autopilot.

The "new thing" this year is that the club table will contain plants brought in by vendors. To accommodate all the plants we are doubling the width, so there will be 8 tables. As usual, we encourage you to bring in specimen plants and get mini-show points for each plant on the table - up to 4 points. Lupe Hulett will be in-charge and will do her best to ensure there is space for the plants you bring. But because we might have more plants than the tables will hold without extreme crowding, please be prepared to have your entries limited. Also please make sure your plants are pest free. Ideally we want a wide variety of mature specimens. Part of the reason we have these tables is to encourage visitors to see plants they like and buy them from our vendors, so labeling is important. Labeling is also important for photographers, so when you fill out an entry slip, use the pens provided and print neatly.

If you are volunteering at the show or attend as a visitor, please sign-in and pick up your Nametag at the Hospitality Table and wear it so visitors can identify you as a Society member.

Jim Wood and Janet Avent are our Nominating Committee this year. They may have already contacted you, but if they do call you, please give serious consideration to their request. As many of you know, the current leadership positions have been stable for a number of years - perhaps too stable for a healthy club. Dale La Forest, President.

## Our Annual Show & Sale Info

Public event: Saturday April 11 and Sunday April 12  
9 AM to 4 PM both days.

Setup starts at 10 AM Friday.

Please bring show plants Friday between 2 PM and 4 PM.

Please remove show plants Sunday between 4 PM and 5 PM.

Aprons will be available for sale with the club name and logo for \$15 each. First come first served. We have ordered 50.

## Spot the Blooms

How many Stapelia blooms can you count in the picture below?  
 Include buds and spent blooms in your count. Answer on back page in Editors Corner.



### MINI-SHOW PLANTS OF THE MONTH (POM) 2015

	Cactus	Succulent
May	Opuntia (flat padded varieties)	Kalanchoe
June	Parodia	Dyckia, Hechtia
July	S. American Columnar	Stapelia, Huernia, Orbea, Pseudolithos
August	Copiapoa	Variegated Succulent
September	Melocactus	Agave, Calibanus, Nolina, Yucca
October	Matucana, Oroya	Argyroderma, Pleiospilos, Faucaria
November	Schlumbergia (Christmas cactus)	Aloe
December	HOLIDAY PARTY	

## MINI-SHOW RESULTS - March 8, 2015

<b>Open Cactus</b>	1st	Gary Duke	<i>Turbincarpus pseudomacrochele</i>
	2nd	Gary Duke	<i>Acharagma roseana</i>
	2nd	Gary Duke	<i>Gymnocactus ysabelae</i>
	3rd	Maria Capaldo	<i>Turbincarpus polaskii</i>
<b>Open Succulent</b>	1st	Jim Hanna	<i>Pelargonium carnosum</i>
	2nd	Laurel Woodley	<i>Pelargonium crithmifolium</i>
	3rd	Laurel Woodley	<i>Pelargonium alternans</i>
<b>Intermediate Cactus</b>	1st	Jade Neely	<i>Gymnocactus beguinii v. senilis</i>
	2nd	Jade Neely	<i>Gymnocactus viereckii</i>
	2nd	Jim Wood	<i>Turbincarpus krainzianus minimus</i>
	3rd	Jim Wood	<i>Turbincarpus gielsdorfianus</i>
<b>Intermediate Succulent</b>	1st	Phyllis DeCresenzo	<i>Pelargonium peltatum</i> 'Ragtime'
	2nd	Phyllis DeCresenzo	<i>Pelargonium coral variegated</i>
	2nd	Jade Neely	<i>Pelargonium mirabilis</i>
	3rd	Phyllis DeCresenzo	<i>Pelargonium crispum</i>
	3rd	Jade Neely	<i>Pelargonium lobatum</i>
<b>Novice Cactus</b>			
<b>Novice Succulent</b>	1st	William Wilk	<i>Pelargonium laxum</i>
	2nd	Mike Short	<i>Pelargonium</i> 'Vancouver Centennial'
	2nd	William Wilk	<i>Pelargonium</i> blooms 3 large below, 2 small above
	3rd	Linda Hudson	<i>Pelargonium</i>
	3rd	Judy Unrine	<i>Pelargonium</i>
>>> Click here for photos of winning plants: <a href="http://southcoastcss.org/mini-show-results-march-2015">http://southcoastcss.org/mini-show-results-march-2015</a> <<<			

## SCCSS MINI-SHOW STANDINGS (as of March 8, 2015)

Novice			Intermediate			Open		
Name	Cactus	Succulent	Name	Cactus	Succulent	Name	Cactus	Succulent
M.A. Bjarkman		4	Anita Caplan	2	4	Maria Capaldo	7	12
Martha Bjerke	4	3	Phyllis DeCresenzo	15	24	Gary Duke	37	6
Sally Fasteau	4	6	Jackie Johnson		12	Jim Gardner		7
Linda Hudson		4	Jade Neely	22	13	Jim Hanna		12
Bernard Johnson		13	Jim Wood	13	3	Laurel Woodley		13
Phillip Johnston Ross	6							
Mike Short		4						
Judy Unrine		4						
William Wilk		10						

### Membership News

Please welcome our new members:

Jackie Colman  
Marilyn Doffing  
Eloise Donnelly  
Linda Hudson  
Linda Lem

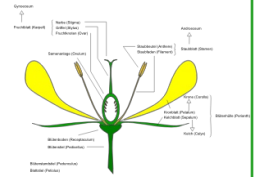
Rodney Smithy  
Terri Straub  
Don Thirkill  
June Treherne  
Peter Walkowiak

## CALENDAR OF UPCOMING EVENTS FOR 2015 (TENTATIVE)

- APR. 11-12 **SOUTH COAST CACTUS & SUCCULENT SOCIETY SHOW & SALE**  
SOUTH COAST BOTANIC GARDEN, 26300 CRENSHAW BLVD., PALOS VERDES PENINSULA, CA  
INFO: 310-378-1953 <http://www.southcoastcss.org>
- APR. 26 **HUNTINGTON PLANT SALE 10 TO 5** HUNTINGTON BOTANICAL GARDENS,  
1151 OXFORD ROAD, SAN MARINO, CA. 626-405-2160
- MAY 3 **SOUTH BAY EPIPHYLLUM SOCIETY SHOW AND SALE**---9am to 4pm  
SOUTH COAST BOTANICAL GARDENS. INFO: 310-833-6823
- MAY 2-3 **SUNSET CACTUS AND SUCCULENT SOCIETY SHOW AND SALE**  
VETERANS MEMORIAL CENTER, GARDEN ROOM  
4117 OVERLAND AVE., CULVER CITY, CA. INFO: 310-822-1783
- MAY 9-10 **LONG BEACH CACTUS CLUB PLANT SHOW AND SALE 10AM-5PM**  
RANCHO LOS ALAMITOS, 6400 BIXBY HILL ROAD, LONG BEACH  
INFO: 310-922-6090—[www.lbcss.org](http://www.lbcss.org)
- MAY 15-16 **GATES CACTUS AND SUCCULENT SOCIETY 34TH SHOW AND SALE**  
FRI & SAT 9-4:30 pm, at LAND SCAPES SOUTHERN CALIFORNIA STYLE  
450 E. ALESSANDRO BLVD., RIVERSIDE, CA INFO: 951-360-8802
- MAY 23-24 **CENTRAL COAST CACTUS & SUCCULENT SOCIETY ANNUAL SHOW & SALE**  
(10-4PM), LUDWICK CENTER, 864 SANTA ROSA, SAN LUIS OBISPO, CA  
INFO: 805-237-2054, [www.centralcoastcactus.org](http://www.centralcoastcactus.org)
- MAY 30-31 **LOS ANGELES CACTUS and SUCCULENT SOCIETY PLANT SHOW AND SALE**  
30Th 9-5, 31St 9-3:30 SEPULVEDA GARDEN CENTER,  
16633 MAGNOLIA BLVD. ENCINO, CA. INFO: [www.lacss-show.com](http://www.lacss-show.com)
- JUNE 6-7 **SAN DIEGO CACTUS AND SUCCULENT SOCIETY –SUMMER SHOW AND SALE**  
BALBOA PARK, ROOM 101, SAN DIEGO, CA. INFO: 858-382-1797
- JUNE 14-19 **CSSA BIENNIAL CONVENTION, PITZER COLLEGE, CLAREMONT, CA**  
<http://www.cssainc.org>
- JUNE 26-28 **CSSA ANNUAL SHOW AND SALE –HUNTINGTON BOTANICAL GARDENS**  
1151 OXFORD ROAD, SAN MARINO, CA. 626-405-2160 or 2277  
PLANT SALES JUNE 26Th THRU 28Th, SHOW JUNE 27Th THRU 28Th
- JULY 24-26 **ORANGE COUNTY CACTUS AND SUCCULENT SOCIETY SUMMER SHOW AND SALE**  
FRI. JULY 24TH 9am-5pm, SAT JULY 25TH 9am-5pm, SUN 26TH 12-4pm  
1000 S. State College Bl., (Anaheim United Methodist Church) Anaheim, CA  
INFO: 949-212-8417
- AUG. 8-9 **30th ANNUAL INTERCITY SHOW AND SALE AT THE LA COUNTY ARBORETUM,**  
9am-5pm daily. 301 NO. BALDWIN AVE., ARCADIA, CA.  
INFO: TOM GLAVICH 626-798-2430 or JOHN MATTHEWS 661-714-1052
- AUG. 29 **HUNTINGTON BOTANICAL GARDENS SUCCULENT SYMPOSIUM**  
ALL DAY AT THE HUNTINGTON
- SEPT. 6 **LONG BEACH CACTUS CLUB ANNUAL PLANT AUCTION -12-5PM**  
RANCHO LOS ALAMITOS, 6400 BIXBY HILL ROAD, LONG BEACH, CA 90815  
INFO: 310-922-6090
- OCT. 24-25 **PALOMAR SHOW AND SALE SAT 9-5, SUN 10-4, SAN DIEGO BOTANIC GARDENS**  
230 QUAIL GARDENS RD, ENCINITAS. INFO: [hciservices@gmail.com](mailto:hciservices@gmail.com). 858-382-1797
- NOV 7-8 **SAN GABRIEL CACTUS AND SUCCULENT SOCIETY SHOW AND SALE**  
9am-4pm both days LA COUNTY ARBORETUM, 301 NO. BALDWIN AVE., ARCADIA, CA.

## BOTANICAL GLOSSARY

Ever find yourself reading up on a plant and being baffled by some of the botanical jargon? Or maybe you would like to learn the proper terms so you can hold your own in a conversation with botanists. Or maybe you just want to impress friends and neighbors with your scientific knowledge.



So here is the next part of our attempt at a dictionary of botanical terms, more to follow later.

DEHISCE - to split open when ripe, as in a capsule

FALCATE - sickle-shaped.

FASCICLE - a cluster or bundle of flowers.

FILAMENT - the stalk of an anther.

FILIFORM - thread-shaped.

FREE CENTRAL - the attachment of the ovules to an outgrowth arising from the base of the ovary.

FUSIFORM - thick, but tapering at both ends.

GEOPHYTE - a plant that stores food underground and has subterranean buds that form aerial growths.

GLABROUS - smooth without any pubescence.

GLAUCOUS - sea-green or covered in bloom.

GLOBOSE - nearly spherical.

HABIT - general appearance of the plant.

HALOPHYTE - a plant that grows in salty soil.

HELIOTROPIC - growing towards sunlight.

HETEROPHYLLOUS - having leaves of different form.

HIRSUTE - hairy, with long distinct hairs.

HISPID - with rough hairs or bristles.

HYDATHODE - water-secreting pore on leaf (Crassulaceae have them for the rapid absorption of water).

HYGROCHASTIC - applied to plants in which the opening of the fruits is caused by the absorption of water (98 percent of mesems have hygrochastic capsules).

© Copyright 1999-2004 Succulent Plant Site, All Rights Reserved, [www.succulents.co.za](http://www.succulents.co.za)

## LIGHTER SIDE

Californian gardeners like rain, it gives them chance to catch up on their housework.

When weeding, the best way to make sure you are removing a weed and not a valuable plant is to pull on it. If it comes out of the ground easily, it is a valuable plant.

When you need three garden tools, two are always easy to find.

"I have a rock garden. Last week three of them died."

Why do melons always have fancy weddings? ... Because they cantaloupe.

New gardeners learn by trowel and error.

### The real meaning of plant catalog terminology:

"A favorite of birds" means to avoid planting near cars, sidewalks, or clotheslines.

"Grows more beautiful each year" means "Looks like roadkill for the foreseeable future."

"May require support" means your kid's engineering degree will finally pay off.

"Moisture-loving" plants are ideal for landscaping all your bogs and swamps.

"Vigorous" is code for "has a Napoleonic compulsion to take over the world."

"Grandma's Favorite" -- until she discovered free-flowering, disease-resistant hybrids.



## BOARD OF DIRECTORS FY2014-2015

### Officers:

President	Dale La Forest
Vice President	Maria Capaldo
Treasurer	Bernard Johnson
Secretary	Philip Johnston Ross
Parliamentarian	Philip Johnston Ross

### Standing Committee Chairs:

Show & Sale	Jim Gardner
Programs Committee	Gary Duke
Finance Committee	Jim Hanna
Communication Committee	Anita Caplan
Membership Committee	Sally Fasteau
Newsletter	Mike Short
Webmasters:	Mike Short Laurel Woodley

### Liaisons:

CGCI	Lynda Johnson
CSSA	Laurel Woodley

### At Large Members:

Bob Caplan
Phyllis DeCrescenzo
Mike Short



### Editor's Corner

Spot the Blooms answer - I can see 47.

Thanks to Jade Neely and Gary Duke for supplying the Presenter of the Month material and POM list.

Thanks to Jim Tanner for supplying the Mini-Show and Plant of the Month material.

Mini-Show winners can request the original (full size) photo of their plant from [mshort@mail.com](mailto:mshort@mail.com) stating either the size and format required or how you intend to use it (1080 computer screen, TV, 4 x 6 print, etc.).

Mike Short.

Contributions to the newsletter are encouraged, especially articles of an educational nature.

We also welcome any information on upcoming events that might be of interest to club members.

Materials supplied for the newsletter ought to be legally usable, there should not be any copyright infringement.

We can attach attributions when required, usually the owner's name, the origin of the material, and any license involved.

Attribution is often required for photos on the web, like those covered by "Wikimedia Commons" licenses.

Please supply any required information (attribution) along with the material submitted.