



Prickly News

South Coast Cactus & Succulent Society Newsletter - July 2012

GENERAL MEETING

Sunday, July 8, 1:30 pm

We will meet in Frances Young Hall

PROGRAM:

Come One – Come All to the greatest Cactus and Succulent Tour on Earth, at least for South Coast Botanical Gardens. Our very own Laurel Woodley will give a brief historical introduction about the cactus and succulent garden at the South Coast Botanical Garden. We'll then dismiss and walk out to the garden for a tour (a garden bus will be available for those needing transportation out to the cactus garden). Several of our own members, such as Laurel Woodley, Carol Causey, Dick Kohlschreiber, Jim Hanna and Gary Duke, were all instrumental in its early development, and I'm sure they will have some interesting stories to tell about its creation while we are out in the garden. See how cactus and succulents can be used for landscaping and how large your little potted plants might like to get with some more leg room. Come and enjoy!

The CSSA ANNUAL SHOW AND SALE is this weekend Friday thru Sunday, June 29—July 1.

Our Bus trip to Nurseries to the north is next Saturday, July 7. Bus will leave promptly at 8:00 am. You must have a reserved seat. Contact Carol Knight to see if there are any seats available. cknight@lausd.net

INSIDE THIS ISSUE

| | |
|-----------------------------------------------------------------|---|
| July Program..... | 1 |
| Membership Dues Notice | 1 |
| POM June First Place Winners | 1 |
| Refreshment Volunteers for July | 1 |
| Presidents Message..... | 2 |
| Board of Directors FY2012-13 | 2 |
| SCC&SS Organization Chart..... | 3 |
| Mini Show Results as of May..... | 4 |
| Dues Renewal Form..... | 4 |
| 2012 Plants of the Month..... | 5 |
| Plant of the Month Rules (POM) | 5 |
| Succulent of the Month - <i>Sansevieria</i> | 6 |
| Cactus of the Month - <i>Copiapoa</i> | 7 |
| <i>Echinopsis</i> - Flowering Cacti By Dick Kohlschreiber | 8 |
| Lithops Program Recap | 8 |
| Upcoming Calendar of Events | 9 |

Membership Renewal Dues

Last year our fiscal year changed to July 1st to June 31st (from January to December.) That means dues were past due on June 31, 2012.

Dues are \$12 per individual plus \$6 for each additional family member at the same address. If you would like to receive a hard copy of the newsletter, please add an additional \$6 to the amount. (Email copy of the newsletter is included with your membership.)

To continue your membership in the South Coast Cactus and Succulent Society, fill out the Dues Renewal Form on Page 4 and send it with your check to Bernard Johnson, Treasurer (address is on the Form.)

This will be your last newsletter if your dues are not current. The newsletter will be sent only to those on the updated Roster.

June POM First Place Winners

Open - Cactus
Gary Duke
Coryphantha palmeri

Open - Succulent
Carol Causey
Pelargonium albricumifolium

Novice - Cactus
There were no
Cactus Entries

Novice - Succulent
Pat Condon
Pelargonium crinafoleum

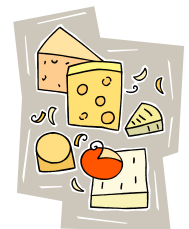
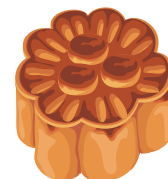
REFRESHMENTS FOR JULY

Volunteers for July refreshments are:

Laurel Woodley, Patrice Holman, Jim Hanna, Martha Bjerke

Anyone else who would like to contribute would be a welcome addition.

Many thanks,
Carol Causey



President's Message July 2012

I'm writing this article before the Saturday, **July 7, bus trip**. Last count I heard was 27, so if everyone shows we should have a pretty full bus. REMEMBER if you plan to buy stuff bring a box and maybe some newspapers to protect plants and keep them from jostling, as they will be stored beneath the bus. Consider wearing a hat and UV skin protection, as we'll be outside much of the time. Bring a lunch and snacks, bottled water will be provided. Wear comfortable walking shoes. It will be a LONG day, so come prepared AND BE PREPARED TO BOARD THE BUS AT 8:00 AM.

Thank you Carol Knight for coordinating this adventure. I'm sure we'll have a great time.

Elections and appointments went pretty smoothly at the June General Membership meeting. The current Officers were re-elected without opposition. The Chairs of the standing committees with the exception of Lucy Hemingway (Membership Committee) agreed to continue for another year and the Chairs of the two ad hoc committees - Gretchen Marlotte (Desert Garden Planning Committee) and Gina Bush (Plant Rescue Committee) also agreed to continue. Although we are looking for replacements, Laurel Woodley will continue as CSSA Liaison and Judy Unrine as CGCI Liaison. Also all the current Committee members will continue their terrific and necessary activities (see Organization Chart on Page 3). Sally Fasteau has volunteered to take over as Membership Committee Chair. And finally Nancy Jengo is replacing Melinda Hines as an At Large Board member. Changes in leadership are bittersweet - we are always sorry to see people go, but look forward to new ideas and fresh energy. Sometimes I wish we could offer a more tangible reward for members who put in a lot of time and effort. If you have an idea, let me know.

Our July meeting promises to be a fun event. In lieu of a classroom presentation, Jade and Gary have arranged a tram tour of the SCBG. I'd almost place money on betting that less than half of the members who attend our meetings regularly have visited the Desert Garden since last July. Of course one benefit of going once a year is that changes will be more easily noticed.

We'll meet in Frances Young hall and one of us will judge the Mini-show (Copiapoa and Sansevieria). Then we'll adjourn to the Koi Pond patio where the tram will take up to ~50 members to the Cactus Garden. If there are more than 50, they will have to walk. At the Cactus Garden, Carol Causey will tell us about the involvement of our Club in constructing the area. In case you weren't aware, Carol is one of the original founding members back in 1972.

Then for those who signed up for the complete tour will get aboard the tram again (about 2:30) at the Rose Garden for a 45 minute tour of the whole garden narrated by Laurel Woodley, returning to the Koi Pond patio around 3:15. After going back to the hall, we'll give out the Birth month and door prize plants. I'm sorry, but if you didn't sign up at the June meeting there are no tram seats left. You will be on your own until the group returns.

Dale La Forest



Officer Installation conducted by George Unrine on the left. From left to right — Bernard Johnson, Treasurer; Dale La Forest, President; Philip Johnston Ross, Secretary; Judy Unrine, Vice President.

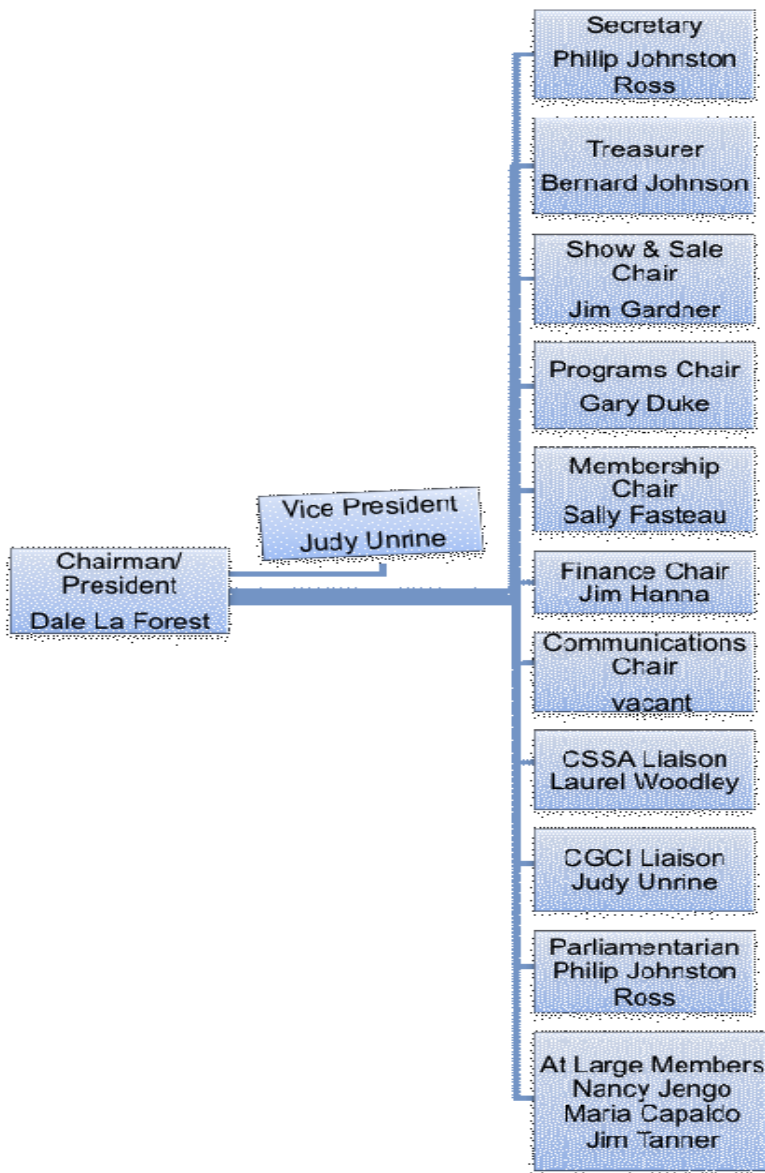
Photo by Laurel Woodley

FYI: Board of Directors for FY2012-2013:

| | |
|-------------------------------|--------------------------------|
| President | Dale La Forest |
| Vice President | Judy Unrine |
| Treasurer | Bernard Johnson |
| Secretary | Philip Johnston Ross |
| At Large Member | Maria Capaldo |
| At Large Member | Jim Tanner |
| At Large Member | Nancy Jengo |
| Show & Sale Chair | Jim Gardner |
| Programs Committee Chair | Gary Duke |
| Finance Committee Chair | Jim Hanna |
| Communication Committee Chair | Vacant Dale La Forest (Acting) |
| Membership Comm. Chair | Sally Fasteau |
| Liaison, CGCI (Acting) | Judy Unrine |
| Liaison, CSSA | Laurel Woodley |
| Parliamentarian | Philip Johnston Ross |

South Coast Cactus & Succulent Society

Organization Chart and List of Officers, Chairs & Committee Members



OFFICERS

President Dale La Forest
Vice President Judy Unrine
Treasurer Bernard Johnson
Secretary Philip Johnston Ross

At Large Board Members Nancy Jengo
 Maria Capaldo
 Jim Tanner

Annual Show & Sale Chair: Jim Gardner
 Positions for 2013 TBD
 (All Chairs have Show/Sale responsibilities)

Programs Committee Chair: Gary Duke
 Purpose- Educate and entertain members.
 Speaker Co-coordinator Gary Duke
 Speaker Co-coordinator Jade Neeley
 Plant Man Jim Hanna
 Mini-show Jim Tanner
 Trips & Tours Coordinator Carol Knight

Finance Committee Chair: Jim Hanna
 Purpose: Generate funds for Club activities.
 Vendor Coordinator Jim Hanna

Communication Comm. Chair vacant
 Acting Dale La Forest
 Purpose. Inform members and community of Club activities and events.
 Event Publicist Anita Caplan
 Newsletter Editor Melinda Hines
 Webmaster David Quadhamer
 Photographer Laurel Woodley

Membership Comm. Chair: Sally Fasteau
 Purpose. Recruit, greet, & integrate new members
 Meet & Greet Irene Brenner
 Refreshments Carol Causey & Danny Westall
 Sunshine Lupe Hewlett

Liaison CGCI (acting) Judy Unrine
Costa Verde District President

Liaison CSSA Laurel Woodley

Parliamentarian (acting) Philip Johnston Ross

Librarian Philip Johnston Ross

Historian Carol Causey

Special & Ad Hoc Committees

Plant Rescue Com Chair: Gina Bush

Desert Garden Planning Comm
 Chair: Gretchen Marlotte



**South Coast Cactus and Succulent Society
Mini Show Final Results
As of June 10, 2012**

| Novice Class | Cactus | Succulents | Open Class | Cactus | Succulents |
|-----------------|--------|------------|---------------|--------|------------|
| Caplan | 8 | 29 | Capaldo | 20 | 12 |
| Condon | | 6 | Causey | 10 | 26 |
| DeCrescenzo | 6 | 13 | Duke | 46 | 21 |
| Dunn | | 1 | Gardner | 12 | 3 |
| Hines | 7 | 1 | Hanna | 3 | 26 |
| Bernard Johnson | 2 | 2 | Kohlschreiber | 2 | 8 |
| Jackie Johnson | 9 | 23 | La Forest | 5 | 5 |
| Knight | | 2 | Warzybok | | 3 |
| Neely | 24 | 12 | Woodley | | 7 |
| Ross | 14 | 3 | | | |
| Shearer | | 5 | | | |
| Tanner | 5 | 6 | | | |
| Unrine | | 7 | | | |
| Veits | | 3 | | | |
| Williams | 3 | | | | |

**South Coast Cactus & Succulent Society
Membership Dues Renewal**

Annual Membership Dues are payable starting with the May meeting and become delinquent after the June meeting. There is no penalty for delinquent dues, but our Membership Committee will contact you. Use the email address to which you want your Newsletter sent. However, if you want hard copy mailed, we would still like to have an email address. **NOTE:** All members listed must reside at the same residence.

Instructions: Please fill out the form, attach check, and mail it to SCC&SS Treasurer, c/o Bernard Johnson, 629 18th St., Manhattan Beach, CA 90266. Or bring to him at the June meeting.

PLEASE PRINT

| | | |
|--------------------------------------------------------------------------------------------|-----------|--------------------|
| Name (of Principle member) | | |
| Additional members | | |
| Mailing Address | | |
| Street, Unit # | | |
| City, State, Zip code | | |
| Email | | |
| Alternate Email | | |
| Home phone | | |
| Cellphone | | |
| Month Joined (2011 only) | | Enter amount below |
| Individual Membership Dues | \$12/year | \$ |
| Additional Family Members | \$6/year | \$ |
| Send Newsletter by Mail | \$6/year | \$ |
| Note: NOT selecting this method means you will receive the newsletter via Email at no cost | Total | \$ |
| 5/23/11 | | |

2012 PLANT OF THE MONTH (POM)

| | SUCCULENTS | CACTUS |
|-----------|-------------------------|--------------------------------------------------------|
| January | Dudleya | Eriosyce |
| February | Echevarias | Turbinicarpus to and include Aztekium, and Geohintonia |
| March | Succulent Bromeliad | Mammillaria - Straight Spines |
| April | PLANT SHOW AND SALE | |
| May | Haworthia / Astroloba | Ferocactus |
| June | Pelargonium/Sarcocaulon | Coryphantha / Escobaria |
| July | Sansevieria | Copiapoa |
| August | Variegated (All) | Variegated Cacti |
| September | Aloes | Ariocarpus |
| October | Agaves | Gymnocalycium |
| November | Crassula | Echinocactus / Stenocactus |
| December | HOLIDAY PARTY | |



PLANT OF THE MONTH RULES – revised January 2010

Up to 3 plants may be entered in each of the two categories: Cactus and Succulent

Entries may be in either the Novice or Open Class

Novice entries must have been held by the owner for at least 3 months. Only plant condition will be judged, not the pot or other enhancements.

Open entries must have been held for at least 1 year. All aspects of the entry will be judged, including plant condition, and pot.

Note: Members showing in the Open class may not enter plants in the Novice class during the year, but may re-enter the Novice class starting in January.

JUDGING

Entrants will receive 6 points for first place, 4 points for second place, 2 points for third place and 1 point for showing a plant that is not disqualified.

The judge may award one 1st place and up to two 2nd and two 3rd places in each category. If plants are not deemed to be of sufficient quality, no place will be awarded.

At the discretion of the judge and/or Mini-show Chair, a plant may be disqualified or removed due to disease or infestation or because it is not the correct genera.

Succulent of the Month - July 2012

Sansevieria

Sansevieria are among the easiest of all succulent plants to grow, requiring only a pot or a spot in the ground. They are tolerant of incredible neglect and abuse, but most grow rapidly and well if watered and fertilized regularly. They do well in Southern California outdoors or in, and suffer damage only if they are cold and wet. They are free from most pests, suffering only rarely from scale. They are prone to fungal rusts, particularly in damp weather. The only cure for rust is to cut off the infected leaves, sterilizing the cutting tool after each cut (an alcohol wipe will do) and then spray the entire plant with a fungicide such as

Funginex. Prevention is much easier. Bright light, and moving air prevent most rusts.

Sansevieria propagation is remarkably easy. Cut a piece off, let it dry for a few days, and stick it in some potting soil. They propagate readily from leaves (tips are best), rhizomes, roots, etc..

There are about 60 species of Sansevieria, but since many of the species are variable and have widespread habi-



Sansevieria hyacinthoides

tats, there are more names than this. There are also dozens of cultivars, particularly of variegated Sansevieria. They are currently in the Dracaceae family, but have moved through the 'dumping ground' families. In older references, they will be found in the Lilaceae, Aloiaceae, Agavaceae, and other families. Most Sansevieria are native to Africa, although some come from India, Asia and the South Sea Islands.

Variegation is very common in cultivated Sansevieria, and variegated plants form the majority of some collections. A variegated pup will appear on an otherwise normal plant. The variegation can be preserved by removing the pup and a portion of the rhizome, and growing it on. If this is not done, the variegated pup, being weaker than the rest of the plant will not reproduce. Variegated plants are slower growers than normal plants, and are much more sensitive to cold and wet conditions. They need protection, particularly in the winter. They are also sensitive to standing water in their crowns, quickly rotting if water is allowed to remain.

Tom Glavich



Sansevieria trifasciata



Sansevieria trifasciata
'Twisted Sister'



Sansevieria pinguicula



Sansevieria 'Ed Eby'



Sansevieria kirkii



Sansevieria fisherii

Cactus of the Month - July 2012

Copiapoa

Copiapoa is a unique genus of spectacular plants from the North Coast of Chile. The genus has no close relatives, and is confined to a region of ecological change, becoming steadily drier for the past several hundred years. The Southern limit of Copiapoa is where reliable winter rains can be found, while the Northern limit is the tropical region of reliable summer rains. Copiapoa live along the coast and through the river valleys cut through the coastal mountains. Some of the species live completely on dense fogs that occur daily for months at a time. They are slow growing.

The hills and valleys of Northern Chile are still not well explored from a botanical point of view, and new species are still being described and additional species will be found in the future.

Given these extreme conditions, one would expect the cultivation of these plants in Southern California, with our frequent winter rains, fogs, and "June gloom" to be quite a challenge. Fortunately, this is not so, and Copiapoa are relatively easy to grow. They respond happily to the same potting mix, watering, and fertilization as most cacti, growing many times faster than they would in habitat. Some species can even be grown in the open ground, as long as the soil is well drained. They do tend to be slower growers than many other genera.

Copiapoa are easily propagated from cuttings or division of clumps. Seed is available from the CSSA seed bank, and most cactus seed houses, and germinates quickly in the spring. They should be started in a moist potting soil, and moved to drier surroundings after germination.

Copiapoa were first collected in the 1840s, and described as Echinocactus, then the home of anything more or less globular. The genus Copiapoa was named by Britton and Rose in 1922 in their great work *The Cactaceae*. The name derives from Chilean province of Copiapo, home to many of the species.

All of the Copiapoa are worth growing. This is a genus unparalleled in excellent species.

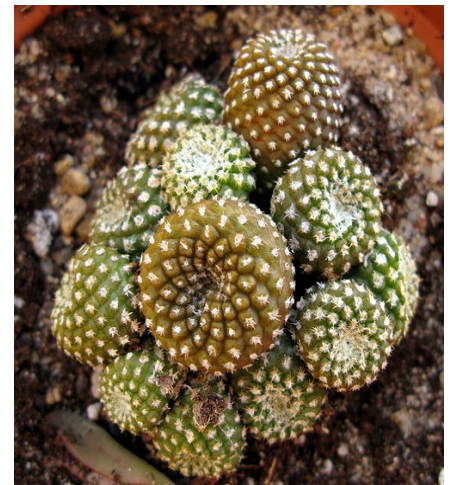
Tom Glavich February 2005



Copiapoa cinerea



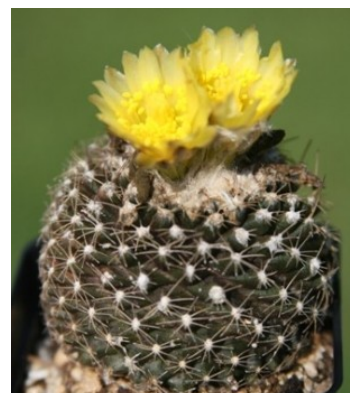
Copiapoa hypogea



Copiapoa lauii



Copiapoa echinoides cv "dura"



Copiapoa tenuissima

The POM articles and photos for Sansevieria and Copiapoa were researched and supplied by Jim Tanner.

Echinopsis - FLOWERING CACTI

By Dick Kohlschreiber

I recently had my plant of *Echinopsis* 'Flying Saucer' and '*Echinopsis* 'Apricot Sensation' bloom in my side yard. Since I live on a corner, many people that were walking for exercise and even some runners would stop to look at these plants when they were in bloom. The flowers were so spectacular that they just couldn't just pass them by.

I first got interested in the hybrid *Echinopsis* when I visited my friend Vera Ward in San Francisco. Vera lives on one of the hillsides in San Francisco and doesn't have much of a yard. But she does have a large deck on the back of her house and it was filled with pots of *Echinopsis* hybrids. When these plants were in full bloom it was like an explosion of color on that deck. The blooms varied from being an inch in diameter to some 6 inches or more in diameter. Vera started out by collecting the Harry Johnson "Paramount" *Echinopsis* hybrids and when the Schick *Echinopsis* hybrids became available from the Huntington, she bought a lot of them. She also had a few Dimmot hybrids.

Vera knew she had gotten me hooked on these plants and was kind enough to give some pups of her plants. I brought them to my house in San Pedro and planted them in pots and had them on the south side of my yard and although they looked healthy and even grew some, they never bloomed for me. After several years of no flowers, I finally decided to plant them in the ground and created a small cactus patch on one corner of my hillside. Two years ago, they all came in bloom and it was wonderful. It couldn't have been at a better time as I had house guests from New Zealand and Germany and they were really impressed with the flowers.



Most people that are really cactus fanciers don't seem very interested in *Echinopsis* and *Echinopsis* hybrids. You never hear about an *Echinopsis* plant winning any type of high award in judged Cactus Shows. Apparently they don't have the type of spination that true cactus lovers get so excited about. I happen to think cactus flowers can be some of the most spectacular flowers you'll ever see and it's hard to beat *Echinopsis* flowers. Try them and you'll like them!

Speaker Program Recap June 10, 2012
by Philip Johnston Ross, Secretary - SCC&SS

Lithops: Different but Not Difficult

Presented by Tom Vermilion



Program: The President introduced the speaker, Tom Vermilion, whose slide show today is entitled, "*Lithops*: Different but Not Difficult." He said he grows these "living stones" in a "screenhouse" with a polycarbonate roof. *Lithops* are compact and inexpensive; a complete collection of the 150 or so species or varieties can fit on a couple of long tables. He likes them for the subtle variety of colors and patterns, on their sides as well as on their top ("window") surfaces. He said that too-frequent watering is the main mistake which kills them. They need to be kept dry during their winter dormancy period (apart from some light spritzing to deter spider mites), until the old pair of leaves is completely dried out. He referred to the "Lithops Calendar" in his document on the San Gabriel Valley (SGV) Cactus Society's website. (He also brought a few paper copies to hand out today). A few of his slides were time-lapse sequences showing the white or yellow daisy-like flowers opening up. They last a day, or a few, at the longest. Snails can be a problem. Ventilation is important. Propagation is preferable by seed rather than by cuttings--seeds germinate prolifically. Tom's primary plant sources are Mesa Garden (NM), fellow growers, and Living Stones Nursery (Tucson). Today he displayed some specimens, including seedlings, on the table in front.

Resources he mentioned include: the one-page sheet he authored and brought a few copies of today, "Growing *Lithops*: Tips for the novice grower" (also available on the SGV club website); the website www.lithops.info; "The New Mastering the Art of Growing Mesembs" by Steven Hammer (find it on the World Wide Web via a search engine); *The New Growing the Mesembs* by Ed Storms (1986); *Lithops: Flowering Stones* by Desmond T. Cole (2005); and especially *Lithops: Treasures of the Veld* (2nd ed., 2010) by Steven A. Hammer.

Some tidbits from the Q & A session: He waters with tap water from a hose; he tried using water treated with vinegar, but not for long enough to notice any results. Seedlings should be kept moist, because in habitat, they tend to germinate and grow the most during very wet seasons. Fertilizer is not needed by *Lithops* which have been re-potted in the past three to four years, but those which have been in their pots longer could use a very mild dose (1/4 strength or less) in the spring. Better seeds, and more, result from two cross-pollinated plants rather than from one self-fertilized plant.



**CACTUS AND SUCCULENT
CALENDAR OF UPCOMING EVENTS FOR 2012
UPDATED 12/14/2011**

- JUNE 29-JULY 1 THIS FRIDAY, SATURDAY AND SUNDAY** **CSSA ANNUAL SHOW AND SALE**
HUNTINGTON BOTANICAL GARDENS
1151 OXFORD ROAD, SAN MARINO, CA.
626-405-2160 or 2277 PLANTS SALES START JUNE 29TH THRU JULY 1ST
THE SHOW OPENS ON THE JUNE 30TH THRU JULY 1ST FREE TO THE PUBLIC
- JULY 7 SCC&SS BUS TOUR SATURDAY 8:00am to ~7:00pm - THE BUS WILL LEAVE**
SOUTH COAST BOTANIC GARDEN PROMPTLY AT 8:00 am Visits scheduled
are Sperling Nursery in Calabasas, Seaside Gardens in Carpenteria, Island View
in Carpenteria and if time allows Green Thumb Nursery in Ventura (See June
Newsletter, Page 2 for complete write-up.
- JULY 27-28 ORANGE COUNTY CACTUS AND SUCCULENT SOCIETY SUMMER SHOW AND SALE**
FRIDAY JULY 27TH Noon until 7pm, SATURDAY JULY 28TH 9am to 5pm
1000 S. State College Bl., (Anaheim United Methodist Church) Anaheim, CA
CONTACT VINCE BASTA 714-267-4329
- AUG. 11-12 27th ANNUAL INTERCITY SHOW AND SALE AT THE LA COUNTY ARBORETUM,**
9am-5pm daily. 301 NO. BALDWIN AVE., ARCADIA, CA.
INFO. CALL TOM GLAVICH 626-798-2430 or JOHN MATTHEWS 661-297-5364
- SEPT. 1 HUNTINGTON BOTANICAL GARDENS SUCCULENT SYMPOSIUM**
ALL DAY AT THE HUNTINGTON
- SEPT. 23 LONG BEACH CACTUS CLUB ANNUAL PLANT AUCTION**
18127 SOUTH ALAMEDA ST., RANCHO DOMINGUEZ, CA----12 PM
- NOV. 3-4 SAN GABRIEL VALLEY CACTUS AND SUCCULENT SOCIETY**
SHOW AND SALE---LA COUNTY ARBORETUM ADDRESS ABOVE.
- NOV. 9-10 ORANGE COUNTY CACTUS & SUCCULENT WINTER SHOW AND SALE 9am-5pm**
1000 S. State College Bl., (Anaheim United Methodist Church) Anaheim, CA
CONTACT VINCE BASTA 714-267-4329



Happy Independence Day