

Prickly News

South Coast Cactus & Succulent Society Newsletter

December 2014

Click here to visit our web site:
<http://www.southcoastcss.org>

Click here to visit our
Facebook page



NEXT MEETING
Sunday December 14, 2014, at NOON

We will meet in the hall.

ANNUAL HOLIDAY POTLUCK PARTY

See inside for details ...

IN THIS ISSUE

PRESIDENTS MESSAGE.....	2
ANNUAL HOLIDAY POTLUCK MEETING.....	2
BOTANICAL GLOSSARY - B.....	3
LIGHTER SIDE.....	3
MINI-SHOW STANDINGS.....	4
PLANTS OF THE MONTH 2014.....	6
MINI-SHOW RULES.....	6
CALENDAR OF UPCOMING EVENTS.....	7
BOARD OF DIRECTORS.....	8
EDITOR'S CORNER.....	8
GREGG'S GREENHOUSE PLANT SALE.....	8



PRESIDENT'S MESSAGE

Many members were frustrated by the full parking lot last month, caused by the SCBG Foundation scheduling a wedding, a Mommy & Me event, and our regular meeting. Normal attendance is about 60 but Tom Glavich treated the 40 members who were able to find a parking space to a delightful presentation. Who knew there were so many bulb genera around the world with gorgeous flowers?

So are you ready for our annual holiday POTLUCK dinner? Maria's article on the Holiday Potluck contains almost all you need to know about the holiday potluck, but I have a few more details. I'll call us to order at NOON and after a few remarks, start the buffet line. Please do NOT leave your car parked in the alley, the Fire Warden has asked us to not block the fire lane. Hope to see ya'll there.

Your Board of Directors authorized the donation of \$2000 to the CSSA to help defray the cost of speakers at the June Convention next year. There will be more on that event early next year, especially as it starts Sunday, June 14, our Society meeting date. The Board also authorized a \$500 donation to the CSSA conservation fund. These donations provide justification for our status as a 501(c)(3) - Non-profit Educational organization.

Laurel Woodley, Mike Short, and Bernard Johnson are working on a major revision to our website. As they are in early stages of exploring options, it's not clear what the final product will look like. As you all are probably aware use of computers/smartphones for communication via options like email, instant messaging and social media like Facebook and Linked-N have become not only common, but also essential to reach younger generations. I think a Society like ours must show some competence in these areas if we are to attract younger members. Let me know if you have expertise or interest in helping us in these areas.

Happy Holidays
Dale La Forest, President.

ANNUAL HOLIDAY POTLUCK MEETING - December 14th, from Noon to 2 PM

Our annual Holiday Pot Luck will be held on Sunday, December 14th, our usual meeting date. The start time is noon. This year we will be able to occupy the auditorium for the Potluck, so we will not be as crowded.

At the November meeting, we had a sign-up sheet to get an idea of how many members plan on attending. This list implies no obligation and if you didn't sign it, you are still encouraged to attend. Thanks to those who volunteered to help me with set-up.

We will start set-up at 10:00 AM. Anyone with a flair for decorating or arms to help with table and chair set up is encouraged to come early. Since we will be in the auditorium, adjust your ideas for decorating accordingly. Let me know ahead of time if there is anything you need. If you were not able to attend the meeting and plan on attending, you may contact me to sign up either through E mail: minniecap@roadrunner.com or phone 310-346-6206.



The Club will provide prime rib and ham and paper plates, cups, and plastic utensils. Coffee and tea will be available. You may bring your own drink if you want something else. Carol Causey is managing the kitchen. Check with Carol when you bring your covered dish for 8-12 people. It can be a salad, side hot or cold dish or dessert. Don't forget a serving utensil. Please bring your food already heated or chilled, before 11:45 - or earlier if they must be heated. The kitchen has one oven, one microwave, and a medium size refrigerator.

Please also bring your 2013 "Annual Plant", *Parodia leninghausii*, which you received last December. Gary Duke will judge this year's plants and invite everyone to pick up an "Annual Plant" for the 2015 contest. It will be fun to see how they did - dead or alive.

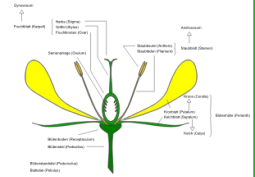
The Mini-show winners will be announced and prize plants will be awarded to the people with the highest point totals. This year we will award to the highest 4 point total in each category. Thanks to all who participated in this interesting and educational activity.

After we adjourn, please pitch-in and help clean up. We expect to adjourn around 2:00 pm.

I look forward to seeing you there.
Maria Capaldo

BOTANICAL GLOSSARY

Ever find yourself reading up on a plant and being baffled by some of the botanical jargon? Or maybe you would like to learn the proper terms so you can hold your own in a conversation with botanists. Or maybe you just want to impress friends and neighbors with your scientific knowledge. So here is the next part of our attempt at a dictionary of botanical terms, more to follow next month.



BIENNIAL - a plant that completes its full life-cycle in two years.

BIFID - divided into two parts.

BILABATE - having two lips.

BISEXUAL - having stamens and pistil in the same flower.

BRACT - a modified leaf associated with the flowering part of the plant.

BRACTEATE - possessing bracts.

BRACTEOLE - a small bract.

© Copyright 1999-2004 Succulent Plant Site, All Rights Reserved, www.succulents.co.za



LIGHTER SIDE

FAST THINKING

- Jack Cody (1989)

I drove into the desert,
To find cacti in the rough.
I have plenty store-bought cacti,
But never have enough.

A split-rock cactus caught my eye,
It had pups and was in bloom.
I was sure it'd look very nice
If I had it in my room.

I was miles away from any town,
There was no one else around.
If I had a shovel,
I could dig it from the ground.

Suddenly the sheriff came,
Along the road he wheeled.
I don't know how he found me out,
Someone must have squealed.

He yelled, "You cannot take away that plant.
We have a law that says, 'you can't.'
I told him, "I'm not taking THAT!
I came to look for a Bishop's Cap."

He quickly cooled and said,
"I'm sorry I was severe
Knowing now why you are here.
Hunt and look as you see fit;
I didn't know that he had lost it."

Q. What does Santa like to do in the garden?
A. Hoe, hoe, hoe!

Q: What is Claustrophobia?
A: The fear of Santa Claus.

Q: What do you call a bankrupt Santa?
A: Saint Nickel-less.

Q: When does New Year's Day come before Christmas Day?
A: Every year!

Q: Why do birds fly south for the winter ?
A: Because it's too far to walk.

Q: How do sheep in Mexico say Merry Christmas?
A: Fleece Navidad!

Q: What do you call a bunch of grandmasters of chess bragging about their games in a hotel lobby?
A: Chess nuts boasting in an open foyer!

SCSS MINI-SHOW STANDINGS (as of November 9, 2014)

Novice			Intermediate			Open		
Name	Cactus	Succulent	Name	Cactus	Succulent	Name	Cactus	Succulent
Roselyn Arbuckle	2	2	Anita Caplan	20	17	Maria Capaldo	37	34
M.A. Bjarkman		13	Phyllis DeCrescenzo	66	68	Gary Duke	88	31
Martha Bjerke		6	Jackie Johnson	29	38	Jim Gardner	8	26
Sally Fasteau		6	Carol Knight		11	Jim Hanna		50
Lou Hagemeyer		2	Jade Neely	58	42	Dick Kohlschreiber		2
Ellyn Holloway		7	Philip Johnston Ross	2	3	Dale La Forest	12	12
Nancy Jengo	1	14				Hank Warzybok	1	
Bernard Johnson	26	6				Laurel Woodley	6	25
Bill Kelly	43	16						
Carmen Shearer	5	2						
Mike Short		18						
Jim Tanner	7	39						
George Unrine	2	1						
Judy Unrine	5	2						
Nancy Veits		1						
J. Williams	4							
Jim Wood	59	26						

MINI-SHOW RESULTS - November 9, 2014

NOVICE CLASS

Cactus	1st	Bernard Johnson	<i>Eriocyse multicolor</i>
	2nd	Jim Wood	<i>Eriocyse islayensis</i>
	3rd	Jim Wood	<i>Eriocyse senilis</i>
Succulent	1st	M.A. Bjarkman	<i>Eucomis pineapple lily</i>
	2nd	Jim Tanner	<i>Bowiea volubilis</i>
	3rd	Jim Wood	<i>Ledebouria socialis cv 'Miner'</i>



INTERMEDIATE CLASS

Cactus	1st	Jade Neely	<i>Eriocyse senilis</i>
	2nd	Phyllis DeCrescenzo	<i>Eriocyse paucicostata</i>
	3rd	Phyllis DeCrescenzo	<i>Eriocyse setosiflora</i>
Succulent	1st	Jade Neely	<i>Bulbine margarethae x hawthorthiodes</i>
	2nd	Phyllis DeCrescenzo	<i>Ledebouria socialis</i>
	3rd	Phyllis DeCrescenzo	<i>Scilla ledebouria</i>



OPEN CLASS

Cactus	1st	Gary Duke	<i>Eriocyse ihotzkyanae</i>
	2nd	Maria Capaldo	<i>Eriocyse nidus v. gerocephala</i>
	3rd	Maria Capaldo	<i>Eriocyse multicolor</i>
	3rd	Gary Duke	<i>Eriocyse rupicola</i>
Succulent	1st	Laurel Woodley	<i>Whiteheadia bifolia</i>
	2nd	Laurel Woodley	<i>Eriospermum lanceifolium</i>
	3rd	Laurel Woodley	<i>Ledebouria revoluta</i>



Novice Class Cactus



Bernard Johnson - *Eriocyse multicolor*

Novice Class Succulent



M.A. Bjarkman - *Eucomis pineapple lily*

Intermediate Class Cactus



Jade Neely - *Eriocyse senilis*

Intermediate Class Succulent



Jade Neely - *Bulbine margarethae x hawthorthiodes*

Open Class Cactus



Gary Duke - *Eriocyse ihotzkyanae*

Open Class Succulent



Laurel Woodley - *Whiteheadia bifolia*

PLANTS OF THE MONTH (POM) 2014

	Cactus	Succulent
May	Stenocactus	Gasteria
June	Crests / Monstrose	Echeveria
July	Coryphantha	Mesembs
August	Ferocactus	Agave / Yucca
September	Ariocarpus	Haworthia
October	Cactus dish gardens	Succulent dish gardens
November	Eriosyce	Winter Bulbs
December	HOLIDAY PARTY	

PLANTS OF THE MONTH (POM) 2015

	Cactus	Succulent
January	Variiegated cactus	Senecio, Othonna
February	Astrophytum	Euphorbia (caudiciform & medusoid)
March	Turbincarpus (incl. Gymnocactus & Acharagma)	Pelargonium
April	PLANT SHOW AND SALE	
May	Opuntia (flat padded varieties)	Kalanchoe
June	Parodia	Dyckia, Hechtia
July	S. American Columnar	Stapelia, Huernia, Orbea, Pseudolithos
August	Copiapoa	Variiegated Succulent
September	Melocactus	Agave, Calibanus, Nolina, Yucca
October	Matucana, Oroya	Argyroderma, Pleiospilos, Faucaria
November	Schlumbergia (Christmas cactus)	Aloe
December	HOLIDAY PARTY	

MINI-SHOW RULES

Exhibitors must be club members in good standing and must be present at the meeting in order to receive points. One name representing the same household must be used unless plants are grown separately. Mini-show coordinator will be consulted if there is any question of entry identity.

Any container may be used, including plastic, as long as it is clean. All plants must be groomed and free of pests and disease.

There are two plant categories, "Cactus" and "Succulents". Up to three plants per individual may be entered in each category.

There are three entry classes: "Novice", "Intermediate" and "Open". Only members new to the hobby would be expected to be in the novice class. After the December meeting, members' point total will be reviewed by the Programs Committee Chair and Mini-show Coordinator.

Novice members awarded more than 64 points or winning at least 6 first place awards will be asked to move to the Intermediate class in both categories. Intermediate members awarded more than 64 points or winning at least 6 first place awards, will be asked to begin showing in the Open class. Members will not be allowed to regress to a lower level.

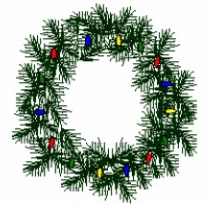
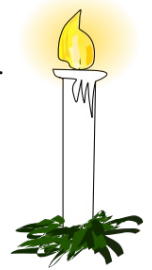
All plants must be grown by the exhibitor for a minimum of six months for novice and intermediate and one year for open class. An individual plant may be entered only once a year.

Points score: First Place 6, Second place 4, Third place 2.

Placement: Entries not disqualified receive 1 point.

CALENDAR OF UPCOMING EVENTS FOR 2014 - 2015 (TENTATIVE)

- FEB. 14 **SAN DIEGO CACTUS AND SUCCULENT SOCIETY, SPRING SHOW AND SALE**
BALBOA PARK, ROOM 101, SAN DIEGO, CA - INFO: 858-382-1797
- MAR. 27-29 **ORANGE COUNTY CACTUS AND SUCCULENT SOCIETY SPRING SHOW AND SALE.**
FRI. AND SAT. MAR. 27-28 9-5PM SUN. MAR. 29th 12-4PM
1000 S. State College Bl., (Anaheim United Methodist Church) Anaheim, CA
INFO: 562-587-3357
- APR. 11-12 **SOUTH COAST CACTUS AN SUCCULENT SOCIETY SHOW & SALE**
SOUTH COAST BOTANIC GARDEN, 26300 CRENSHAW BLVD., PALOS VERDES, CA
INFO: 310-378-1953 <http://www.southcoastcss.org>
- APR. 26 **HUNTINGTON PLANT SALE 10 TO 5** HUNTINGTON BOTANICAL GARDENS,
1151 OXFORD ROAD, SAN MARINO, CA. 626-405-2160
- MAY 3 **SOUTH BAY EPIPHYLLUM SOCIETY SHOW AND SALE**---9am to 4pm
SOUTH COAST BOTANICAL GARDENS. INFO: 310-833-6823
- MAY 2-3 **SUNSET CACTUS AND SUCCULENT SOCIETY SHOW AND SALE**
VETERANS MEMORIAL CENTER, GARDEN ROOM
4117 OVERLAND AVE., CULVER CITY, CA. INFO: 310-822-1783
- MAY 15-16 **GATES CACTUS AND SUCCULENT SOCIETY 34TH SHOW AND SALE**
FRI & SAT 9-4:30 pm, at LAND SCAPES SOUTHERN CALIFORNIA STYLE
450 E. ALESSANDRO BLVD., RIVERSIDE, CA INFO: 951-360-8802
- MAY 16-17 **LONG BEACH CACTUS CLUB PLANT SHOW AND SALE 10AM-5PM**
RANCHO LOS ALAMITOS, 6400 BIXBY HILL ROAD, LONG BEACH
INFO: 310-922-6090—www.lbcss.org
- MAY 23-24 **CENTRAL COAST CACTUS & SUCCULENT SOCIETY ANNUAL SHOW & SALE**
(10-4PM), LUDWICK CENTER, 864 SANTA ROSA, SAN LUIS OBISPO, CA
INFO: 805-237-2054, www.centralcoastcactus.org
- MAY 30-31 **LOS ANGELES CACTUS and SUCCULENT SOCIETY PLANT SHOW AND SALE**
30Th 9-5, 31St 9-3:30 SEPULVEDA GARDEN CENTER,
16633 MAGNOLIA BLVD. ENCINO, CA. INFO: www.lacss-show.com
- JUNE 6-7 **SAN DIEGO CACTUS AND SUCCULENT SOCIETY -SUMMER SHOW AND SALE**
BALBOA PARK, ROOM 101, SAN DIEGO, CA. INFO: 858-382-1797
- JUNE 14-19 **CSSA BIENNIAL CONVENTION, PITZER COLLEGE, CLAREMONT, CA**
<http://www.cssainc.org>
- JUNE 26-28 **CSSA ANNUAL SHOW AND SALE -HUNTINGTON BOTANICAL GARDENS**
1151 OXFORD ROAD, SAN MARINO, CA. 626-405-2160 or 2277
PLANT SALES JUNE 26Th THRU 28Th, SHOW JUNE 27Th THRU 28Th
- JULY 24-26 **ORANGE COUNTY CACTUS AND SUCCULENT SOCIETY SUMMER SHOW AND SALE**
FRI. JULY 24TH 9am-5pm, SAT JULY 25TH 9am-5pm, SUN 26TH 12-4pm
1000 S. State College Bl., (Anaheim United Methodist Church) Anaheim, CA
INFO: 949-212-8417
- AUG. 8-9 **30th ANNUAL INTERCITY SHOW AND SALE AT THE LA COUNTY ARBORETUM,**
9am-5pm daily. 301 NO. BALDWIN AVE., ARCADIA, CA.
INFO: TOM GLAVICH 626-798-2430 or JOHN MATTHEWS 661-714-1052
- AUG. 29 **HUNTINGTON BOTANICAL GARDENS SUCCULENT SYMPOSIUM**
ALL DAY AT THE HUNTINGTON
- SEPT. 6 **LONG BEACH CACTUS CLUB ANNUAL PLANT AUCTION -12-5PM**
RANCHO LOS ALAMITOS, 6400 BIXBY HILL ROAD, LONG BEACH, CA 90615
INFO: 310-922-6090
- OCT. 24-25 **PALOMAR SHOW AND SALE SAT 9-5, SUN 10-4, SAN DIEGO BONTAIC GARDENS**
230 QUAIL GARDENS RD, ENCINITAS. INFO: hciservices@gmail.com. 858-382-1797



MEMBERSHIP NEWS

Membership Renewal Information

Renewals	90
New Members this year:	17
TOTAL Members:	107

We will continue to enroll new members and accept any renewals throughout the year. The membership form is available at all meetings and on our website:

[Click here for membership form on the web](#)

Please welcome our latest new member:

Deborah Richards of Buena Park

SCCSS Name Badges

If you need a new name badge, please notify the membership chair before the next meeting and one will be waiting for you at the sign-in table. New members may pick up their badges at the membership table.

Membership Chairperson:

sallyfasteau@cox.net 310-544-1313



BOARD OF DIRECTORS FY2013-2014

Officers:

President	Dale La Forest
Vice President	Maria Capaldo
Treasurer	Bernard Johnson
Secretary	Philip Johnston Ross
Parliamentarian	Philip Johnston Ross

Standing Committee Chairs:

Show & Sale	Jim Gardner
Programs Committee	Gary Duke
Finance Committee	Jim Hanna
Communication Committee	Anita Caplan
Membership Committee	Sally Fasteau

Liaisons:

CGCI	Lynda Johnson
CSSA	Laurel Woodley

At Large Members:

Bob Caplan
Phyllis DeCrescenzo
Mike Short

Gregg's Greenhouse Plant Sale

Exotic, Rare and Unusual Plants

Seedlings to specimens

Great Holiday Gifts for Plant-lovers!

WHEN: Saturday, December 13, 2014, 10am-4pm

WHERE:

**GREGG'S GREENHOUSE
ISLAND VIEW NURSERY
3376 FOOTHILL ROAD
CARPINTERIA, CA 93013**

**CASH – CHECKS - MAJOR CREDIT CARDS ACCEPTED!
Need more info? Email u4banut@yahoo.com**

Gregg DeChirico is the current president of the Cactus & Succulent Society of America (CSSA) and is a frequent vendor at succulent society shows.

Editor's Corner



Cover page photo: *Echeveria* hybrid. Taken in the propagation nursery at the South Coast Botanic Garden.

Thanks to Jade Neely and Gary Duke for supplying the Presenter of the Month material and POM list.

Thanks to Jim Tanner for supplying the Mini-Show and Plant of the Month material.

Mini-Show winners can request the original (full size) photo of their plant from mshort@mail.com stating either the size and format required or how you intend to use it (1080 computer screen, TV, 4 x 6 print, etc.).

Mike Short.

Contributions to the newsletter are encouraged, especially articles of an educational nature. Also information on upcoming events that might be of interest to club members are welcomed. Humorous articles, photos, cartoons, or poetry also welcomed.

Materials supplied for the newsletter ought to be legally usable, there should not be any copyright infringement. We can attach attributions when required, usually the owner's name, the origin of the material, and any license involved. Attribution is often required for photos on the web, like those covered by "Wikimedia Commons" licenses. Please supply any required information along with the material submitted.