

SOUTH COAST CACTUS AND SUCCULENT SOCIETY NEWSLETTER

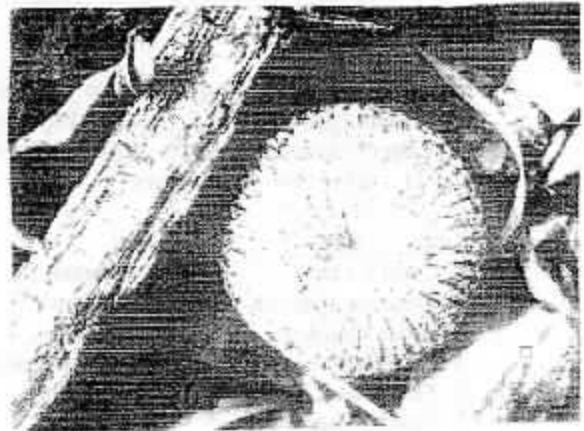


NUMBER 5

MAY, 2006

May 14—South Coast Botanical Gardens
1:30 P.M.—General Meeting

PROGRAM: KELLY GRIFFIN will talk about his two recent trips into mainland Mexico this spring. His interest was the genus *Agave*, but he will show many other fascinating finds as well. He covered some areas that he had not previously been able to find time to get to and visited plants that he had always wanted to see in the wild; most notably, *Agave pelona* and *Agave zebra*....also *A. colorata* and *A. bovicornuta*. Kelly works for Rancho Solidad nurseries in Rancho Santa Fe, CA (858)756-3717 and I'm sure he will bring some fantastic plants to sell. Kelly is an excellent and enthusiastic speaker. Let's give him a big welcome again!! Reminder: Pick and save your seed pods from your plants. We will have a seed painting party in June again.
Gary Duke



SOUTH COAST CACTUS AND SUCCULENT SOCIETY PLANTS OF THE MONTH—2006



	CACTI	SUCCULENTS
May	Lobivia	Echeveria
June	Copiapoa	Senecio and Othonna
July	Rebutia/ Sucocrutia	Cissus & Cyphostemma
August	Favorite Cacti (3)	Favorite Succulents (3)
September	Cacti of Argentina	Adenium & Plumeria
October	----- Break -----	
November	Miniatures (3 inch max)	Miniatures (3 inch max)
December	----- Christmas Party -----	



Annual Show Great Success

Thanks to our new Show Chairman, Harry Fletcher, our annual show and sale last April 8-9 was yet another great success. And thanks to the showing Show Committee members for their efforts.

Sales Coord	Jim Hanna
Set Up Coord	Sandra Fletcher and Dale La Forest
Club Table Coord	Harry Fletcher doing double duty
Publicity	Lowell Howard and Harry Fletcher
Photographer	?
SCBG Window Display	Sandy Fletcher
Lunch Coord	Tom & Gloria Crowley
Checkout Coord	Carol Causey – assisted by many
Reception & Information	Diane Connell
Clean Up	All

Members Setting Up Displays. This year we didn't specify a theme, leaving that up to the displayers. As usual there "jaw dropping" plants and displays that were guaranteed to please our visitors. The Club Table had over 50 wonderful plants. This year our visitors chose Table 10 as their favorite followed by table 13 and 11 – all worthy competitors.

Table	Name	Theme		
1	Carol Causey	Sansevierias	9	Jim Hanna Dudleya vs Echeveria
2	Rainbow Gardens	Mixed genera	10	Jim Hanna Mixed genera
3	Erika Van Auker	Fancy pottery	11	Jim Gardner Mixed genera
4	Bill Hagbloom	Sculents in bloom	12	Epiphyllum Society Announcing Show
5	Tom Glavich	Mixed genera	13	The Fletcher' Mixed media & genera
6	Martha Ponce	Grafted plants	14	Carol Causey Mixed genera with art
7	Martha Ponce	Mixed genera	15	Hank Warzbok Alocs and agaves
8	Dale La Forest	Mixed genera		

The following members sold plants, pottery, and or supplies

Gary Duke	Lupe Hulett
Jim & Roberta Hanna	Jim Gardner
Bill Baker (California Gardens)	Tom Glavich (Skyview Succulents)
Hank Warzybok	SC Botanic Gardens
Carol Causey	Rainbow Gardens (Books)
Erica van Auker	

Although we don't count attendance, it seemed a little less than last year. Perhaps our late spring was the cause. Special thanks to Tom and Gloria for coordinating the lunches and bringing in that delicious ham and turkey. Also it was a good idea to hire someone to set up and take down the tables – probably prevented several sore backs. ☺

PLANT OF THE MONTH RULES

- * A maximum of three plants may be entered in each category (cactus and succulent).
- * There will be two classes of entrants: novice and advanced.
- * Intermediate entrants must have had the plant in their possession for at least six months; beginners, for three months.
- * Entrants will receive 6 points for first place, 4 points for second place, 2 points for third place, and 1 point for third showing a plant that does not place.
- * There may be up to three third places in a category. If plants are not deemed to be of sufficient quality, no place will be awarded.
- * Entry tags must be collected by the person in charge of recordkeeping
- * At the annual Christmas party, award plants will be presented to the ten highest cumulative point holders, regardless of class.



PLANT OF THE MONTH TOTALS -- 2006

CACTUS ADVANCED	MAR TOTALS		CACTUS NOVICE	MAR TOTALS	
	Duke	9		12	Capaldo
Fletcher	15	29	Ponce	2	5

SUCCULENTS ADVANCED	MAR TOTALS		SUCCULENTS NOVICE	MAR TOTALS	
	Duke	2		4	Capaldo
Fletcher	8	20	Hulett		8
Gardner	2	5	la Forest	6	6
Hanna	10	29	Ponce	8	12
LaForest		1	Ross	5	5

*CACTUS AND SUCCULENT
CALENDAR OF UP COMING EVENTS
FOR 2006*

- May 6 & 7th SUNSET CACTUS AND SUCCULENT SOCIETY SHOW AND SALE
VETERANS MEMORIAL CENTER, GARDEN ROOM
4117 OVERLAND AVE. CULVER CITY, CA. INFO. #310-822-1783
- MAY 21 HUNTINGTON PLANT SALE 10 TO 5 HUNTINGTON BOTANICAL
GARDEN 1151 OXFORD ROAD, SAN MARINO, CA 626-405-2160
- MAY 21 EPIPHYLLIUM SOCIETY SHOW AND SALE
LOS ANGELES COUNTY ARBORETUM, ARCADIA, CA 310-831-1209
- JUNE 10th GATES CACTUS AND SUCCULENT SOCIETY 29th SHOW AND
SALE---SAT. 9 TO 4 SUN. 9 TO 4 -----SAT. SHOW STARTS AT 1 PM
JURUPA MOUNTAINS CULTURAL CENTER, 7621 GRANITE HILL DRIVE
GLEN AVON, CA INFO. 909-360-8802
- JUNE 3 & 4th SAN DIEGO CACTUS AND SUCCULENT SOCIETY -SHOW AND SALE
BALBOA PARK, ROOM 101, SAN DIEGO, CA. INFO.-#619-477-4779
- JUNE 30th-
July 2nd CSSA ANNUAL SHOW AND SALE -HUNTINGTON BOTANICAL
GARDENS AT 1151 OXFORD ROAD, SAN MARINO, CA
626-405-2160 or 2277 PLANTS SALES ON THE 1ST THRU THE 3RD
THE SHOW OPENS ON THE 2ND TO THE PUBLIC
- JUNE ? LOS ANGELES CACTUS AND SUCCULENT SOCIETY SHOW AND SALE
SEPULVEDA GARDEN CENTER, 16633 MAGNOLIA BL., ENCINO, CA.
SHOW INFORMATION-CALL 818-363-3432
- AUG. 19 & 20 21st ANNUAL INTERCITY SHOW AND SALE-LA COUNTY ARBORETUM
301 NO. BALDWIN AVE., ARCADIA,CA. INFO. CALL TOM GLAVICH
AT 626-798-2430 or GENE OSTER AT 818-998-9306
- SEPT. 2 HUNTINGTON BOTANICAL GARDENS SUCCULENT SYMPOSIUM
ALL DAY AT THE HUNTINGTON
- SEPT. 24 LONG BEACH CLUB ANNUAL AUCTION AT DOMINGUEZ ADOBE
18127 SO. ALAMEDA ST. COMPTON (DOMINGUEZ HILLS) CA.
- OCT. 14 & 15 SAN GABRIEL VALLEY CACTUS AND SUCCULENT SOCIETY
SHOW AND SALE-- LA COUNTY ARBORETUM ADDRESS ABOVE.

The Virtual Gardener Non-commercial Websites

By Dale La Forest
May 2006

I'm not including web links here; all these sites are easy to find by doing a web search. Also I intend to say just enough about them to help you determine whether you want to visit. All these sites have many, many pages of material and the information is regularly updated. So when you have some time at your computer, plan on spending a while at each of them. If you like them, be sure to save the web address (URL) as a "bookmark" or "favorite" depending on what browser you use.

The **Cactus & Succulent Society of America** maintains a website that has many useful links. In addition to listing contacts for its entire affiliate clubs, the site boasts a seed catalogue listing over 450 species, available at very reasonable prices. The "Services" tab contains many useful links. Unfortunately the "Events" tab doesn't list shows of the affiliate clubs, but of course they can be contacted for that information.

The following quote from this website explains why it is a "**must browse**" for every cactus and succulent collector. "*The Cactus and Succulent Plant Mall (CSPM) is an Internet resource for all growers of cacti and succulent plants. It is regularly updated with information on cactus and succulent societies and suppliers of plants, seeds and literature on cacti and succulents. The CSPM has developed and hosts WebPages for cactus and succulent organizations worldwide (138 domains + 80 web sites within cactus-mall.com + 77 advertisers). It also aims to maintain as complete a list of web pages and other cactus and succulent related Internet facilities as possible.*" Here's a list of the tabs you can browse. . Conservation, Cactus Clubs, Subscriptions, Request Link, Mailing Lists, CD-ROMs, New Items, Webrings, Nurseries, Gardens, Pictures, Events, Books, Pests, Environment, Propagation, Email, Seeds, and Other Plants.

The **Garden Web** is another monster site that you will probably never explore to its ultimate depths. Its basic functions include, Garden Voices (gardener blogs), Garden Forums (scores of them, some on very unusual topics), the Hortiplex (basically a search engine in which you can get lost), FAQs (basic articles on gardening - a good place to get started learning), Glossary (do you have a botanical word that needs defining?), Resources (search for clubs and events), and the Garden Bazaar (where you can find links to plant and gardening mail order sources).

A visit to **Dave's Garden** will probably stun you by its breadth. But it contains approximately the same type of material and links that are on the Garden Web.

Another excellent website is "**The Amateur's Digest**" operated by Marina Wellham who also publishes a magazine by the same title. There's a lot to browse here and the site is devoted entirely to cacti, succulents and caudiciforms. If you browse around on the site, eventually you'll stumble across the photo section, which can be helpful in IDing NOIDs (No ID). The plants are listed alphabetically by genus and contain many seldom seen events, like flowering Sansevieria.

... but you get the idea. If you want a question answered, a rare plant or seed, to just to talk or tell someone about your plants, the Internet is one place to go. Just don't get so wrapped up, you forget to water your plants and talk to them occasionally. ☺ If you have a different favorite website tell me about it at dlaforest@soeal.rr.com

Cactus of the Month

Lobivia

Propagation from seed or from offsets and cuttings is also easy. Offsets are separated from the main plant with a clean, sharp knife, left to dry and replanted. Small cuttings only need a few days drying. Cuttings should be taken in the late spring through the summer, when the plant is in active growth. They can be taken any time. They root quickly. Seed is best planted in April or May, to get advantage of a full summer's growth before dormancy. Many of the more unusual varieties are available only as seed.



Figure *Lobivia* sp.

Lovely Lobivias:

Lobivia arachnacantha is a commonly seen, small clustering plant, looking as much like a *Rebutia* as a *Lobivia*. It flowers freely, making a good show in mid spring, and has small, soft spines.

Lobivia densispina grows in clusters from a large tap root. The spines form a close network that shades and in many cases almost hides the plant body. The flowers vary from yellow to orange and red.



Figure *Lobivia pampana crest*

Lobivia ferox almost looks like a *Thelocactus*. It is globular, usually singular, and grows to 8 inches in diameter. It has very long spines, which on some cultivars can get to be more than six inches long.

Lobivia laeae is a purple flowered species, with wonderfully long spines. It makes an impressive sight, even when not in flower.

Lobivia tiegeliana is another with a large tap root. It is a globular plant, and variable spines from black to honey colored. Most have violet to purple flowers, although there is a variety with yellow flowers as well.

References:

- Cullman, Gotz and Groner, *The Encyclopedia of Cacti*
- Preston-Mafham, *Cacti, The Illustrated Dictionary*
- Innes, C. and Glass, C., *Cacti*

Succulent of the Month

Echeveria

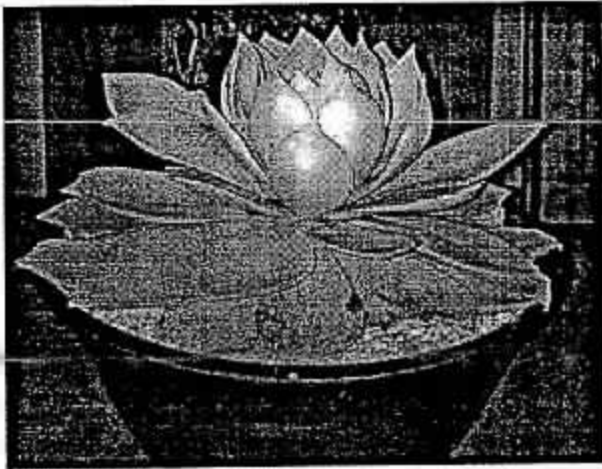


Figure *Echeveria subrigida* grown by Marilyn Henderson from the 2000 Inter City Show

Echeveria, along with *Dudleya*, *Pachyphum*, and *Sedum* is one of the principal members of the succulent New World *Crassulaceae*. *Echeveria* come principally from the mountains of Eastern Mexico, although there are plants found from Texas into South America. Venezuela has a significant population.

The genus *Echeveria* is named after Atanasio Echeverria, an illustrator of a projected *Flora Mexicana* prepared under the direction of Martin Sesse, from 1789 to 1803. Martin Sesse received a Royal Patent for a botanical expedition to Mexico from Charles III, King of Spain in 1788. Charles III was one of the most enlightened of the late 18th century kings, with widespread cultural and scientific interests. Unfortunately, he died shortly after giving the Patent, and before supplying any money. His son, Charles IV, was not enlightened, not particularly bright, and unlucky. He lost Spain to Napoleon, and spent the last years of his life in exile in Rome. Sesse went on with the expedition, and although chronically short of funds, and often sick and hungry, with Jose Mocino, Atanasio Echeverria, and others,

collected hundreds of plants over a 15 year period. The three returned to Spain, expecting to become famous and publish their *Flora Mexicana*, only to be ignored by the King. Sesse returned to his land holdings; Mocino went to work at the Museum of Natural History in Madrid, and Echeverria was hired as an artist's assistant.

Mocino sent the original drawings to the famous botanist Alphonse De Candolle as Napoleon marched on Madrid. The originals were lost in the confusion of the Napoleonic wars, but the drawings were saved by Alphonse De Candolle, who hired 120 draftsmen to work for 10 days making several sets of precise tracings of Echeverria's drawings. De Candolle also named the genus in a lecture in 1827, first publishing it in 1928.

Coming from mountainous regions, *Echeveria* prefer well drained soil, and good ventilation. They also prefer cooler temperatures, looking their best in late winter and early spring. The plants swell with the winter rains, and as growth starts the colors become more intense. Although they don't go completely dormant in summer, growth slows, and in the inland valleys, plants tend to wilt and sulk, even with some shade. In California, the best *Echeveria* growers tend to live near the coast, and near San Francisco.

Propagation of *Echeverias* is a required skill rather than an optional one. All *Echeveria* have leaves that dry and fall off as they age, leaving a thick, and usually ugly stem. With time, most *Echeverias* offset between the older leaves. These offsets can be removed, the bottom-most leaves of the offset removed, and the stem and remaining leaves planted as soon as the cut

Succulent of the Month

Echeveria

stem is dry. Successful rooting almost always follows. The terminal rosette should also be periodically removed and restarted in the same way, with all the dead and the older live leaves removed. The old stem can be kept for awhile, as it frequently offsets from the top or side, and these offsets can be removed as well and propagated. *Echeverias* have flowers on an extended stalk (raceme). The raceme has small leaves on it, and occasionally, rosettes. These will root easily as well.

Echeveria purpusorum is a small slow growing species from Southern Mexico. It has short stiff white-green leaves, with dark edges and small red spots.

Echeveria make wonderful landscape plants, and mass use of these are highlights of the gardens at the Huntington and the Getty Museum. The Huntington takes pains to keep the plants out of a formal geometric pattern. The Getty does the reverse, fitting in better with the architecture and design of the gardens at this site. Both are worth seeing. The same plants are used to very different effect.

Echeveria runyonii is known only from cultivated plants, and one of the more interesting blue-gray species.

Echeveria subrigida, shown above, is one of the white glaucous species. The one shown was grown to perfection, with great care taken to keep the leaves free from spotting by water.

Favorite species include:

Echeveria have also been hybridized frequently, and many interesting plants are available.

Echeveria agavoides, forms large light green rosettes, with red tips when grown in full sun. Two popular cultivars are "Lipstick" which has red edges and "Ebony" which has dark red-purple edge. The colors are enhanced by sunlight.

Echeveria 'Blue Curls' is really more green than blue with a pink edge.

Echeveria 'Arlie Wright' is a large cultivar that is a beautiful burgundy color when grown in full sun.

Echeveria elegans is a smaller species with pale green leaves that makes an excellent bedding plant.

Echeveria 'Topsy Turvy' is a medium sized plant with leaves peaked in the center.

Echeveria lilacina is a grayed purple color. The color is due to a waxy coating. Healthy growth and freedom from spotting is achieved by keeping the leaves free from water. It grows to about 8 inches in diameter, and is one of the most beautiful of the species.

References

L. Carruthers and R. Ginns, *Echeverias*
 A. Sajeva and M. Costanzo, *Succulents, The Illustrated Dictionary*
 E. Walther, *Echeveria*

Tom Glavich January 2001



www.sacramentoess.org

**A Special Announcement
for Cactus and Succulent Enthusiasts**

The Sacramento Cactus and Succulent Society will hold their 46th annual Show and Sale, Saturday and Sunday, May 6-7, at Shepard Garden and Arts Center, 3330 McKinley Blvd., Sacramento, CA.

"Nature's Wonders ... Succulent and Spiny" is the theme of the annual judged show for 2006. Show times are 10 a.m. to 5 p.m. Saturday and 10 a.m. to 4 p.m. Sunday. The public is invited and admission is free. A map is included for your convenience.

There will also be a sale both days with vendors from many California areas offering a wide selection of cactus and succulents as well as unique pottery to enhance their display. They can answer questions and make suggestions for using these unusual plants in your garden. Sales open at 9 a.m. Saturday, 10 a.m. Sunday.

We welcome you to our California Capitol City and hope you will enjoy our show. For further information please contact:

Lou Grubaugh
Publicity Chair
grubaugh@omssoft.com
530-753-5795

Kathy Hodges
President
agavequeen@comcast.net
916-682-1196



JUNE 15-18, 2006

HOSTED BY

**THE CENTRAL OKLAHOMA CACTUS
& SUCCULENT SOCIETY**

AND

THE CACTUS & SUCCULENT SOCIETY OF TULSA

AT THE

CLARION MERIDIAN HOTEL & CONVENTION CENTER

737 S. MERIDIAN

OKLAHOMA CITY, OKLAHOMA

405-942-3511 OR WWW.CLARIONOKC.COM

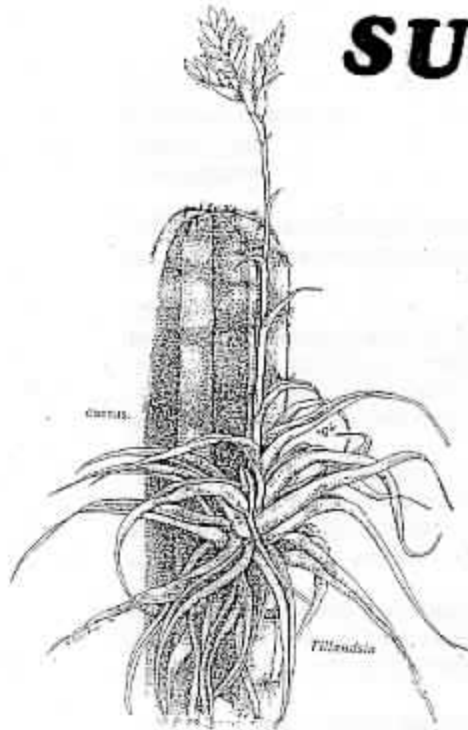
GREAT SPEAKERS - GREAT VENDORS

LOTS OF FUN

WWW.MIDSTATESCONFERENCE.ORG

CONTACT PERSON FOR THE C.O.C.S.S. IS JOYCE HOCHTRITT
405-737-1831 EMAIL: CACTYBUD@COX.COM
9008 N.E. 17TH ST. OKLAHOMA CITY, OK. 73141
CONTACT PERSON FOR THE C.S.S.T. IS LOWILLA WILSON
918-357-2401 EMAIL: LOWILLA@VALORNET.COM

CACTUS & SUCCULENT SHOW & SALE



Information: 310/822-1783

Club Meetings: 1st Tuesday of each month
(except July & August) at 7:30 PM
Burtza W. Chase Park, 13550 Midland Way
Marina Del Rey



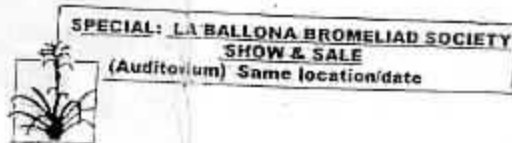
**garden room, veteran's memorial bldg.
4117 overland (at culver), culver city**

MAY 6 - 7

...free admission...

PLANT SALE: SATURDAY 10 - 5
SUNDAY 10 - 4

SHOW: SATURDAY 12 - 5
SUNDAY 10 - 4



**SPECIAL: LA BALLONA BROMELIAD SOCIETY
SHOW & SALE**
(Auditorium) Same location/date

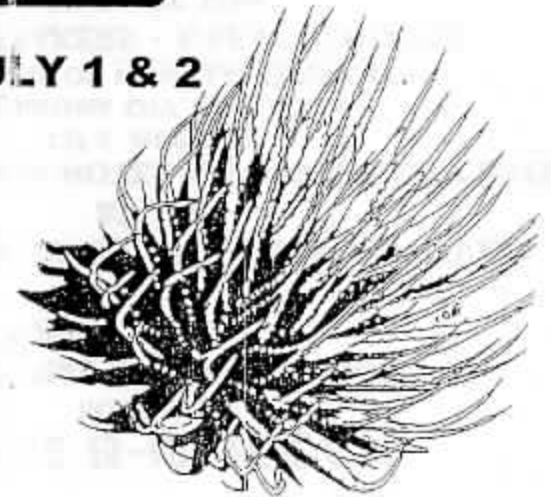
The Cactus and Succulent Society of America

Cactus and Succulent SHOW & SALE

JUNE 30, JULY 1 & 2

SHOW PLANT
EXHIBITERS
RECEIVE A FREE
ADMISSION PASS TO
ALL THE GARDENS
& PUBLIC
BUILDINGS WITHIN
THE HUNTINGTON
BOTANICAL
GARDENS

INFO: (310) 822-1783



SALE: Friday, Saturday & Sunday 10:30 am
SHOW: Saturday & Sunday 10:30am

Free Admission to Show & Sale

Huntington Botanical Gardens

1151 Oxford Rd. San Marino
For Information Call - (626) 405-2100